

WEAVE·IT BOOK

NUMBER THREE



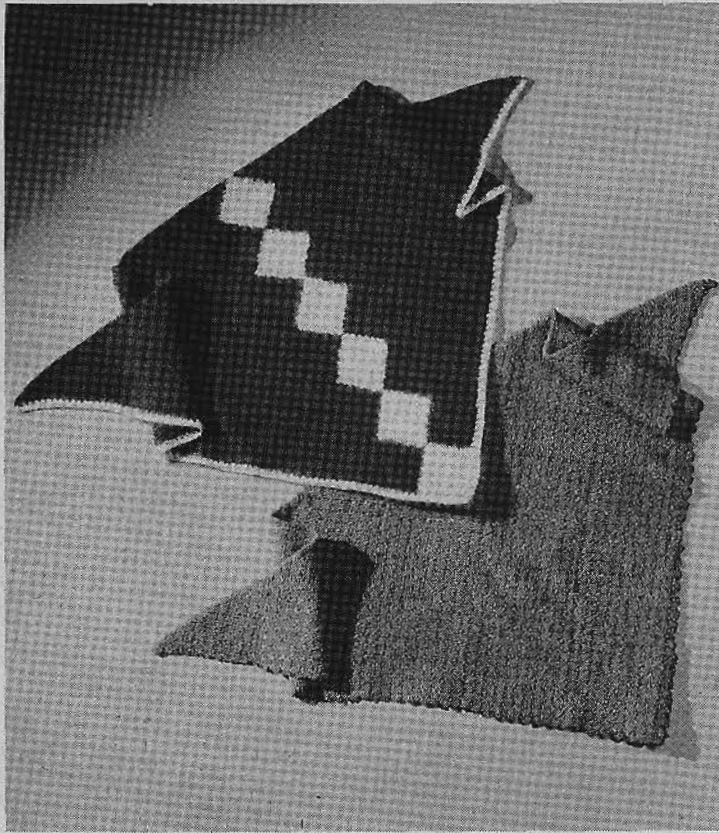
PRICE TWENTY-FIVE CENTS

WEAVE·IT BOOK

EVERY one of the attractive bags, blouses, sweaters, table runners, luncheon sets, bedspreads, and afghans shown in this book can be made quickly and inexpensively on a Weave-It. They have been designed and styled with simple smartness and carefully planned color combinations that fit into the modern woman's home and wardrobe. By following simple directions, you can make anything you see and admire in this book. Yet there is plenty of opportunity to express your individuality by adapting these basic patterns to suit your own color or style ideas.

The directions are complete and the diagrams are clear and easy to follow. You will be surprised to discover how fascinating and how easy it is to weave the squares of yarn and sew them into these smart, well-fitting garments and attractive accessories.

Scarfs...



EQUIPMENT AND MATERIALS

1 WEAVE-IT
1 OZ. YORKSHIRE WORSTED

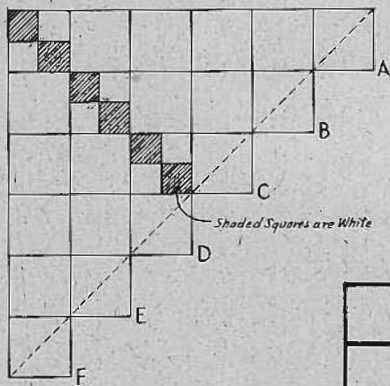
Weave twenty-one squares. Assemble as shown in diagram. Turn points A, B, C, D, E & F to wrong side and catch down before pressing to make neck edge straight.

EQUIPMENT AND MATERIALS

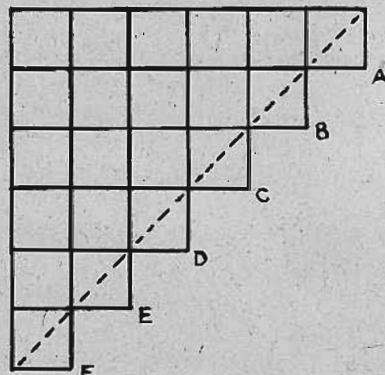
1 WEAVE-IT
1 JUNIOR WEAVE-IT
1 OZ. NAVY BLUE SHETLAND
1 OZ. WHITE SHETLAND

Weave eighteen regular squares and twelve junior squares. Assemble as shown in diagram. Turn points A, B, C, D, E & F to wrong side and catch down before pressing to make neck edge straight.

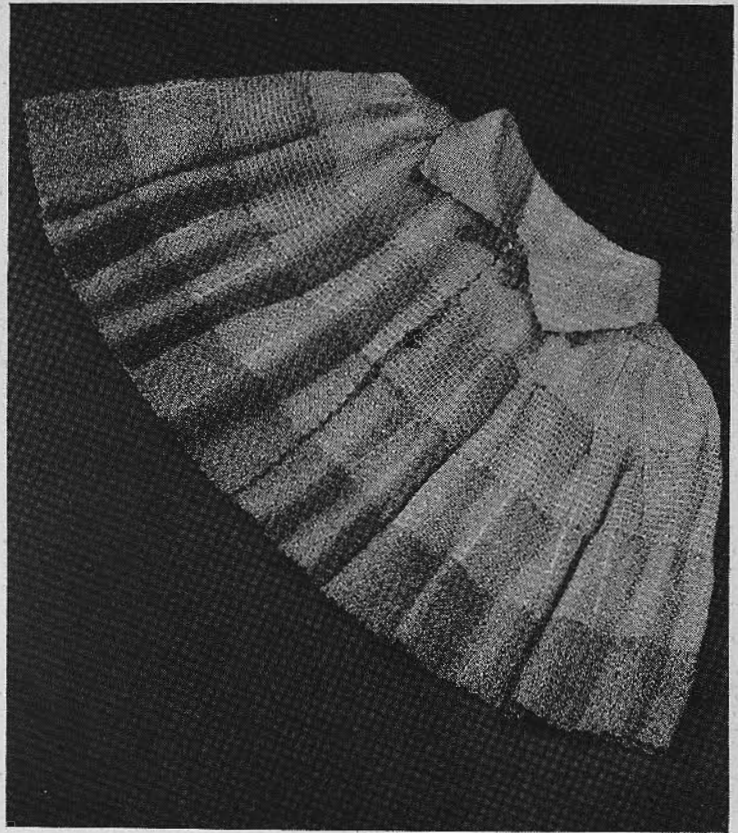
A striking scarf can be made by combining two contrasting colors. Wind the first and second directions with one color. Wind the third way and weave with the second color. This takes one ounce of each color but there is sufficient material left to make a small bag to match. When making this type of square it is advisable to change when half the required number of squares is completed and reverse the use of colors. Winding the first two directions takes a bit less yarn than winding the third and weaving.



18 Regular Sqs. 12 Junior Sqs.



Evening Cape...



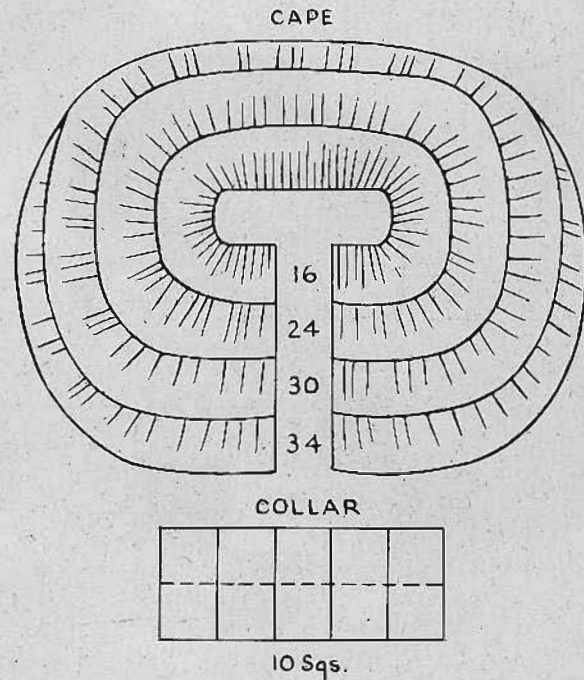
EQUIPMENT AND MATERIALS

1 WEAVE-IT

3 OZ. HONEYDEW LUSTRE CREPE

3 OZ. SPANISH RUST LUSTRE CREPE

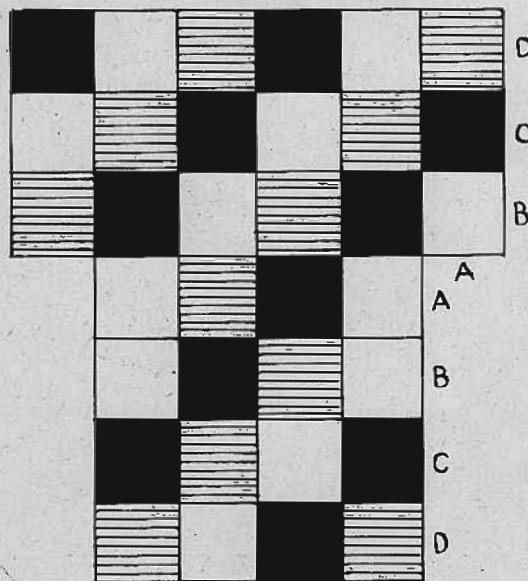
Weave 28 sqs. of Honeydew for the collar, the 2 shoulder sqs. and the 1st row. Weave 24 sqs. for 2nd row by winding with Honeydew and weaving with Rust. Weave 30 sqs. for the 3rd row by winding with Rust and weaving with Honeydew. Weave 34 Rust sqs. for the 4th row. Assemble as shown in the diagram, gathering and pinning the 2nd row to the shoulder sqs., having most of the fullness at shoulders, but also some fullness at back of neck. Continue easing on the other rows. Sew collar on double. Single crochet around edges.





Yarn Bag ...

BAG



34 Sqs.

EQUIPMENT AND MATERIALS

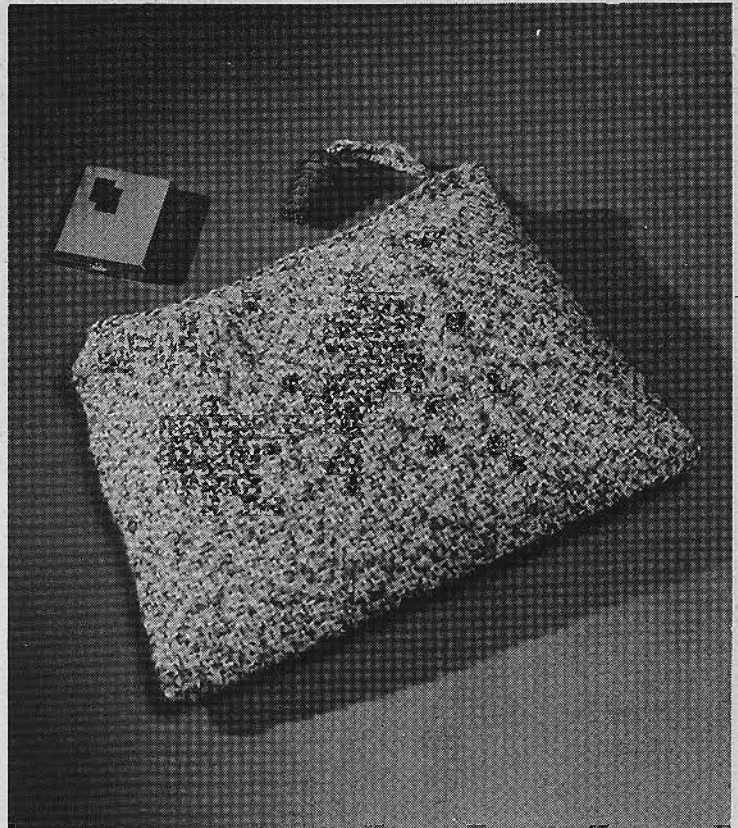
1 WEAVE-IT

1½ OZ. BROWN GERMANTOWN

1½ OZ. TAN GERMANTOWN

Weave 12 Tan, 11 Brown, and 11 Tan and Brown Tweed sqs. which are made by winding twice with Tan and the third winding and weaving of brown. Assemble as shown, matching the lettered sqs. Make a lining the same shape and sew on before sewing to the handles.

Zipper Bag...

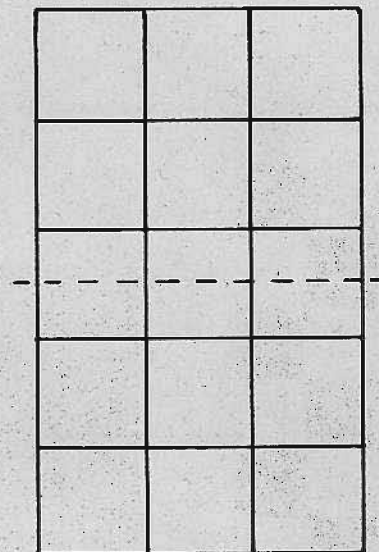


EQUIPMENT AND MATERIALS

- 1 WEAVE-IT
- 1 7" ZIPPER
- 1 OZ. TWEED MIXTURE

This attractive bag is made of 12 sqs. of Tweed yarn. Two small pleats shape the top and a row of crochet finishes it. The zipper is inserted between the lining and the bag.

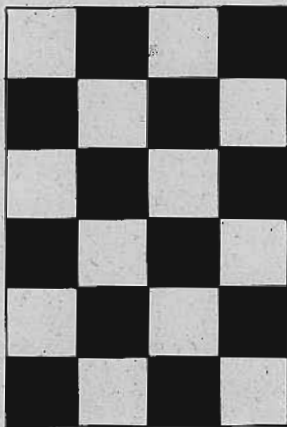
BAG



15 Sqs.

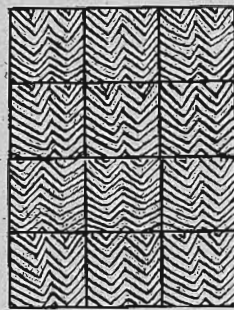


Hand Bags...



24 Sqs.

FOLD



12 Sqs.

FOLD

EQUIPMENT AND MATERIALS

1 WEAVE-IT

1 OZ. BROWN GERMANTOWN

1 OZ. TAN GERMANTOWN

Weave 12 brown squares and 12 tan squares. Sew together. Press. Braid tan and brown yarn for handles. Cross-stitch any desirable patterns with brown or tan squares.

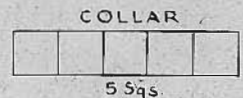
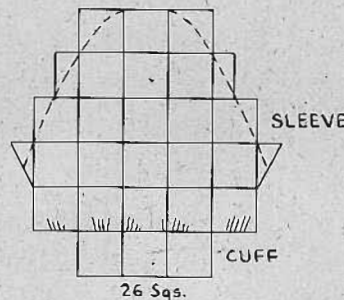
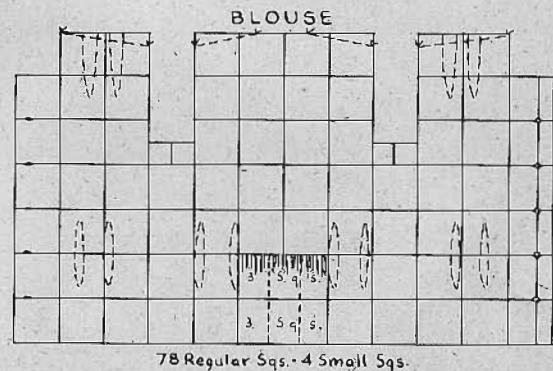
The hand bag shown is made the same as bag on Page 7 except that the herringbone weave is used in making the squares.

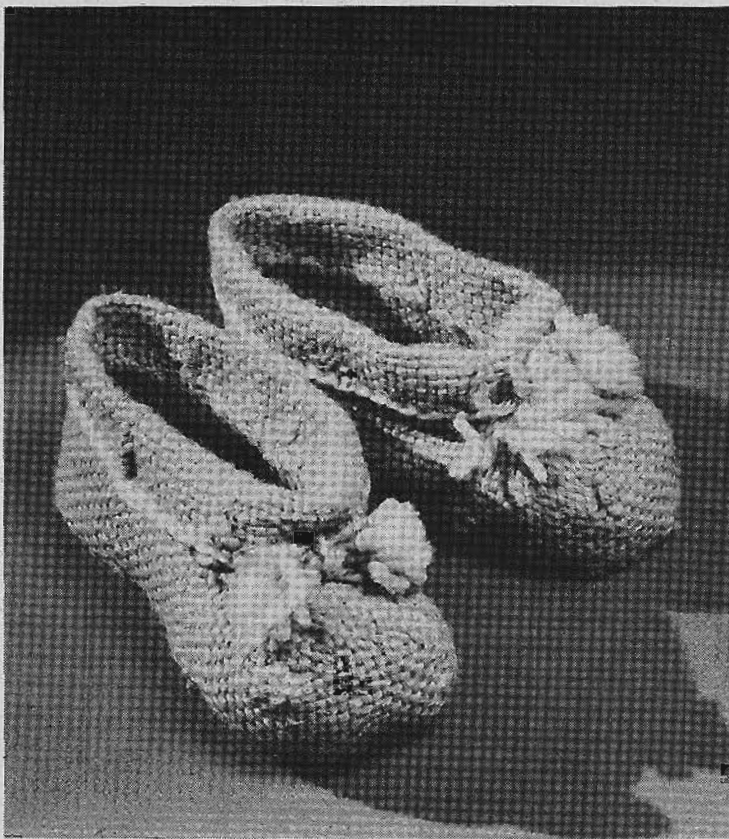
Blouse..

EQUIPMENT AND MATERIALS

1 WEAVE-IT
1 JR. WEAVE-IT
9 oz. BOUCLE WOOL

Weave 135 regular sqs. and 4 junior sqs. Assemble the body of the blouse as shown in the diagram. At the waistline at center back, note that 3 sqs. are eased onto 2 sqs. thus increasing the last two rows by 1 sq. Leave openings at the joinings of the edge sqs. of the left front for buttonholes. Single crochet around buttonholes for strength. Sew in junior sqs. under the arm. A regular sq. can be used by stitching it twice through the middle and then cutting it in half. Stitch in darts as shown or to fit figure. Baste front to back at shoulders with a sloping seam, starting 1 inch down on the armhole and ending even half way in on the center back sqs. Stitch and press. Assemble sleeves as shown. Press. Sew underarm seam. Press. Gather top of sleeve as shown by dotted line. Pin to armhole having the underarm sqs. matching and the top center sq. 1 inch in back of the shoulder seam so that there is more fullness in back. Baste and stitch. Stitch again $\frac{1}{8}$ " from seam and trim off points. Single crochet around armhole. Sew on collar, gathering both collar and blouse at center back. If necessary, put darts in back to make neck fit close. Single crochet around whole blouse. Reinforce left front by sewing matching ribbon down inside. Sew on buttons. Press seams. Finish with ribbon bow and belt.





Baby Bootees

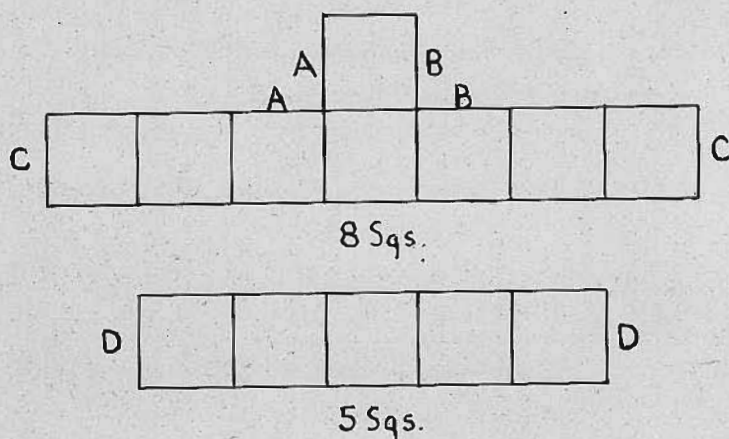
EQUIPMENT AND MATERIALS

1 JUNIOR WEAVE-IT—2"

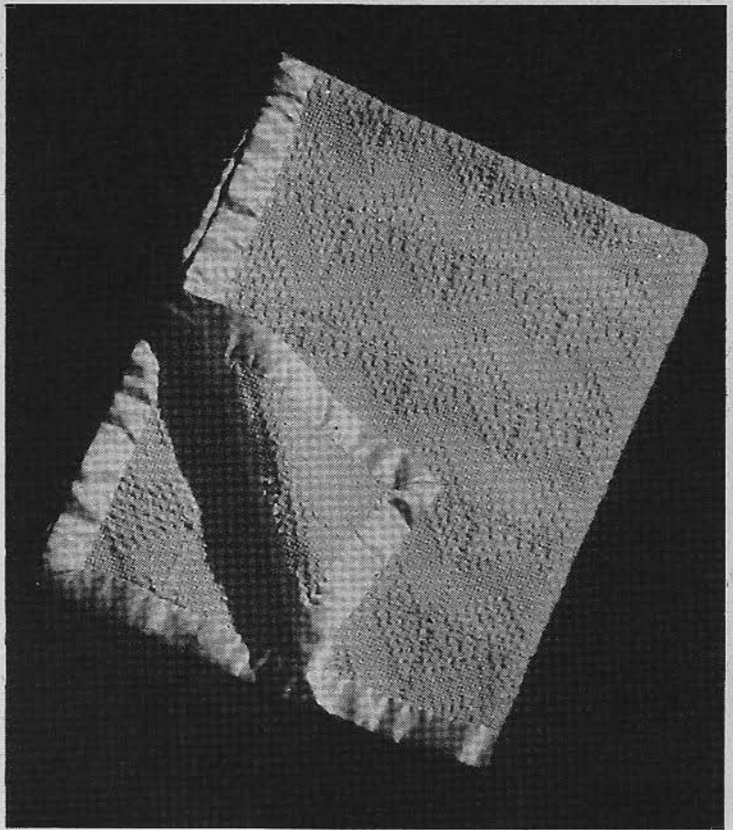
1 OZ. GERMANTOWN ZEPHYR

1 PAIR LAMB'S WOOL SOLES

Make twenty-six squares on the Junior Weave-It and assemble eight as shown in the diagram joining edges A to A; B to B and C to C. Assemble five squares as shown in diagram joining D to D. Join this section to the top edge of the first section you have assembled having the seams of this joining on the outside of the bootee. The top squares may be turned over half way to form cuff. Turn bootee wrong side out and sew to lamb's wool sole easing any fullness around the toe. Cords may be braided or crocheted to run through where the top row joins the body of the bootee. Tassels or pompons may be attached to the ends of the cords.



Baby Blanket



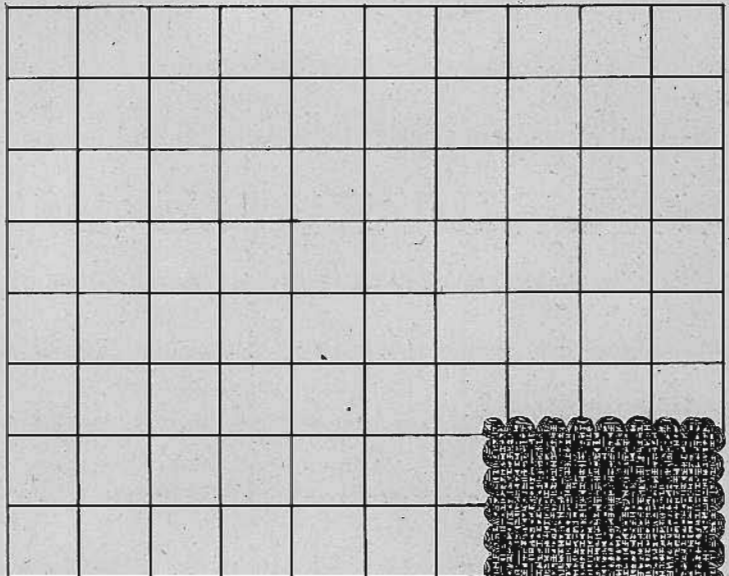
EQUIPMENT AND MATERIALS

1 WEAVE-IT

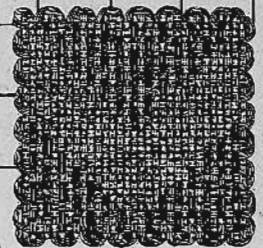
4 OZ. PINK GERMANTOWN WORSTED

4 OZ. WHITE GERMANTOWN
WORSTED

Weave eighty squares using Zig-Zag pattern. Assemble as shown in diagram. Press with a damp cloth. Bind edges with 2" satin ribbon. A bit of embroidery adds to the appearance of the blanket.



80 Sqs.



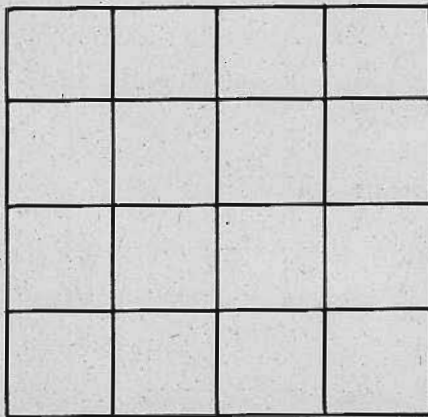


Pillow...

EQUIPMENT AND MATERIALS

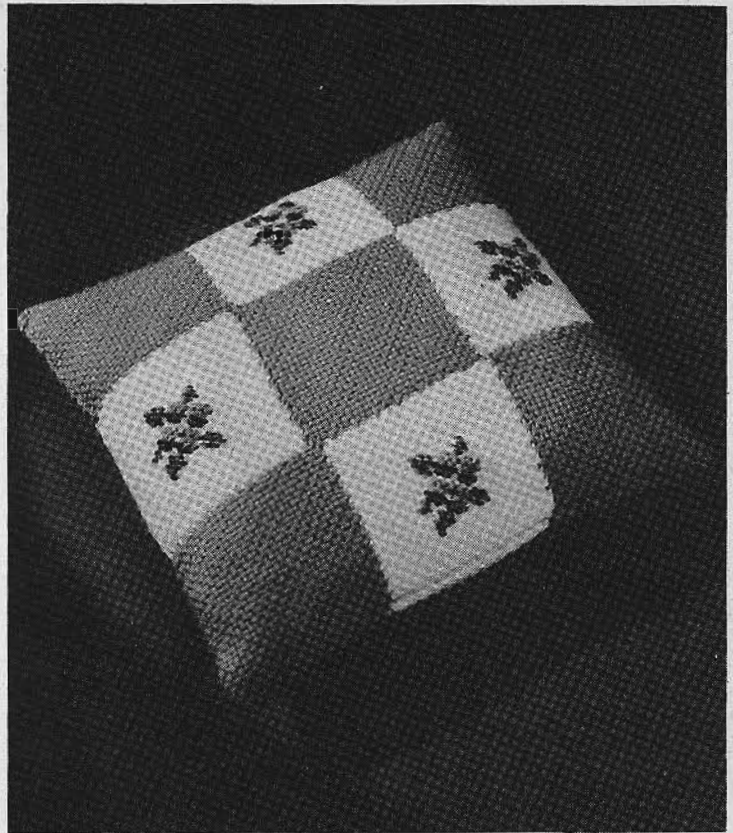
- 1 WEAVE-IT
- 2 OZ. GERMANTOWN
- 1 14" PILLOW
- 1½ YDS. RAYON

Weave 16 squares and assemble as shown in diagram. Crochet edge all around in a pleasing color. Sew two sides of pillow to two sides of rayon backing, leaving rest open to insert pillow. Press. Insert pillow and sew together other two sides. Pillow may be decorated with cross-stitching or embroidery.



16 Sqs.

Pillow...

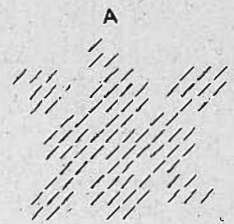
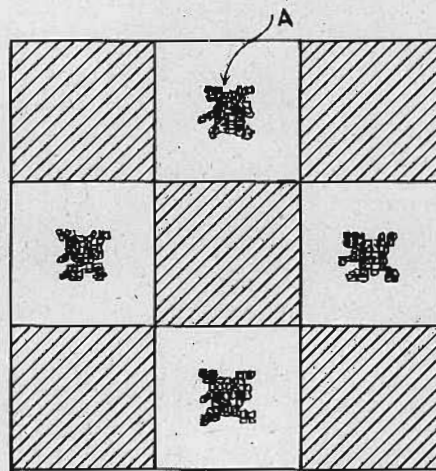


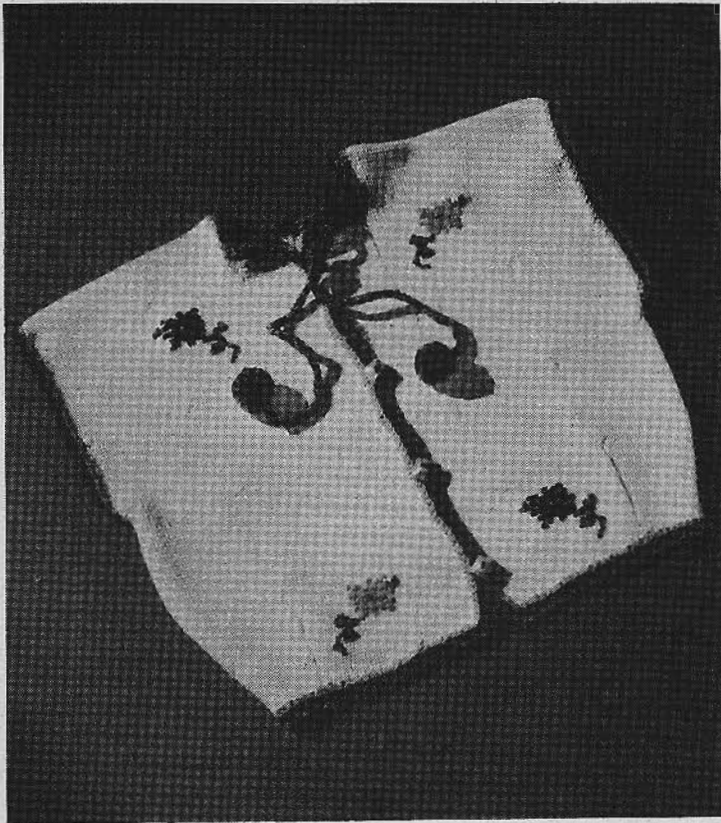
EQUIPMENT AND MATERIALS

1 WEAVE-IT
1 OZ. GERMANTOWN, DARK
1 OZ. GERMANTOWN, LIGHT
1 12" PILLOW

Weave ten squares of dark color and eight squares of the light color. Assemble as shown above, making back and front of pillow identical. Sew back and front together at one side and press with damp cloth. Fold right sides together and sew up two remaining sides and about 1½" at each end of fourth side, leaving rest open to insert pillow. Turn right side out and press with damp cloth again. Insert pillow and sew opening together. Pillow may be decorated with embroidered flowers, tassels, cords, etc.

Note: In sewing back and front together be sure to use the same color of yarn as the squares.



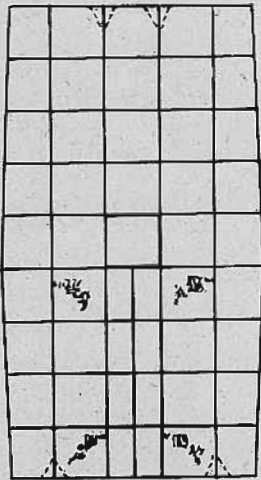


Tyrolean Jacket

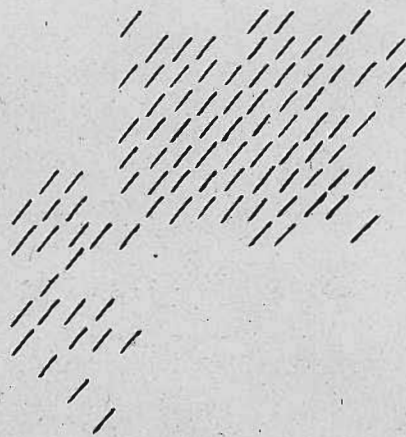
EQUIPMENT AND MATERIALS

- 1 WEAVE-IT 4"
- 4 OZ. KNITTING WORSTED
- 3½ OZ. SKEINS SHETLAND FLOSS,
BRIGHT CONTRASTING COLORS
- 1 CROCHET HOOK

Weave forty-eight regular squares and assemble as shown in diagram, folding center squares in half to form front opening. Make two one-inch darts at bottom of center back and one one-inch dart at center bottom of each front. Embroider flowers on front. Sew underarm seams starting at the bottom sewing up approximately two and one-half squares. Crochet three rows single crochet around armholes using bright color Shetland. Repeat around the bottom, up the two fronts and around the neck. On the second and third rows around make loops for buttons on one side of front in approximately the middle of each square. Around the neck crochet three and make a loop, and continue in the same way all around. Press. Sew on buttons and run cord through loops around neck. The cord is made by using three strands of Shetland and single crochet a chain about one yard long. Tassels or pompons may be put on the ends of the cord.



JACKET



CROSS STITCH FLOWER

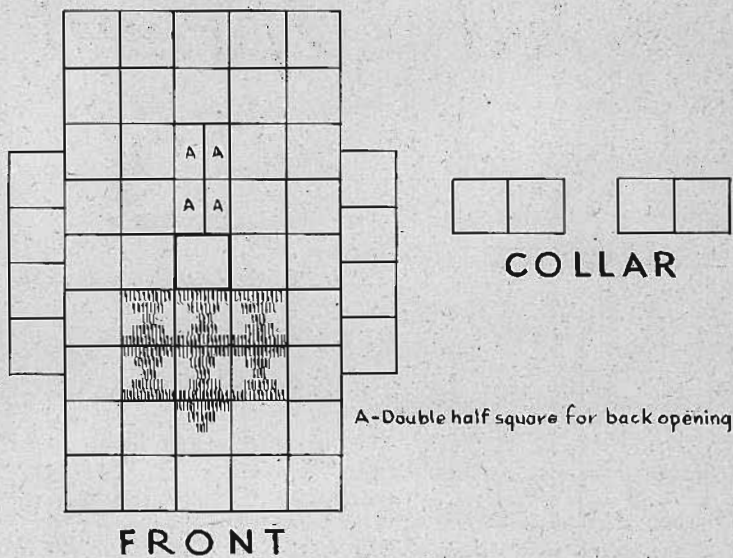
Slip-on Sweater

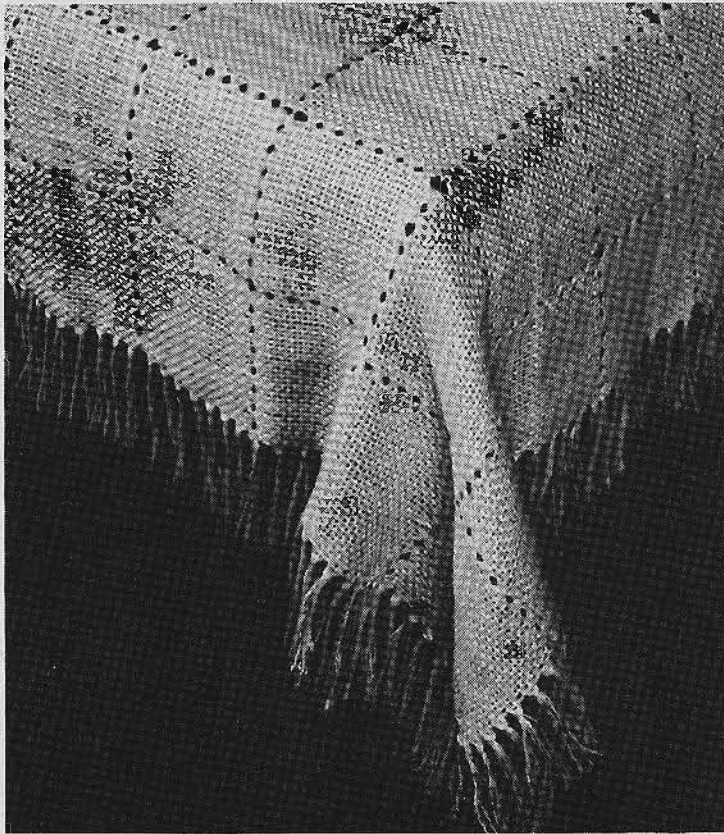


EQUIPMENT AND MATERIALS

- 1 WEAVE-IT
- 4 OZ. SHETLAND FLOSS
- 8 BUTTONS
- 1 PR. NO. 3 KNITTING NEEDLES
- 1 CROCHET HOOK

Weave fifty-three regular squares and seven Hour Glass Weave (p. 11 Weave-It Weaves). Assemble as shown in diagram. Fold over two squares on each side to form back opening. Pick up approximately sixty-four stitches on each sleeve, knit two purl two for one and one-half inches. Pick up approximately eighty stitches at bottom back, knit two purl two for four inches. Repeat this in front. Sew on collar. Crochet around collar and opening, making eight button loops on one side. Press, sew up underarms and sew on buttons. A gusset may be used underarms if desired. Illustration shows clearly how gusset is inserted. Any one of the Weave-It Weaves may be substituted for the Hour Glass.





Bed Spread

EQUIPMENT AND MATERIALS

1 WEAVE-IT
36 OZ. LINEN FLOSS

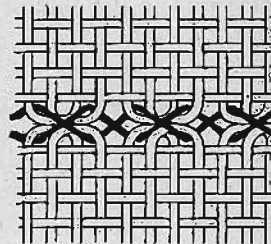
Weave 504 squares of linen floss. When sewing these together match loops and sew with a fine thread.

Assembling

Lay out the finished squares on a table or other flat surface in the size and proportions called for in the diagram of the article you are making. Place the squares so that the bumps on the edges of one are directly opposite the bumps on the square next to it.

Thread a large crewel needle with a piece of the same material as the squares. If this thread is three times the length of the seam to be sewed there will be no necessity for joining a new thread in the middle of a seam.

Starting with the squares farthest away from you and sewing toward yourself, take one stitch in the first bump of one square skipping the bump directly opposite, take one stitch in the second bump of the opposite square

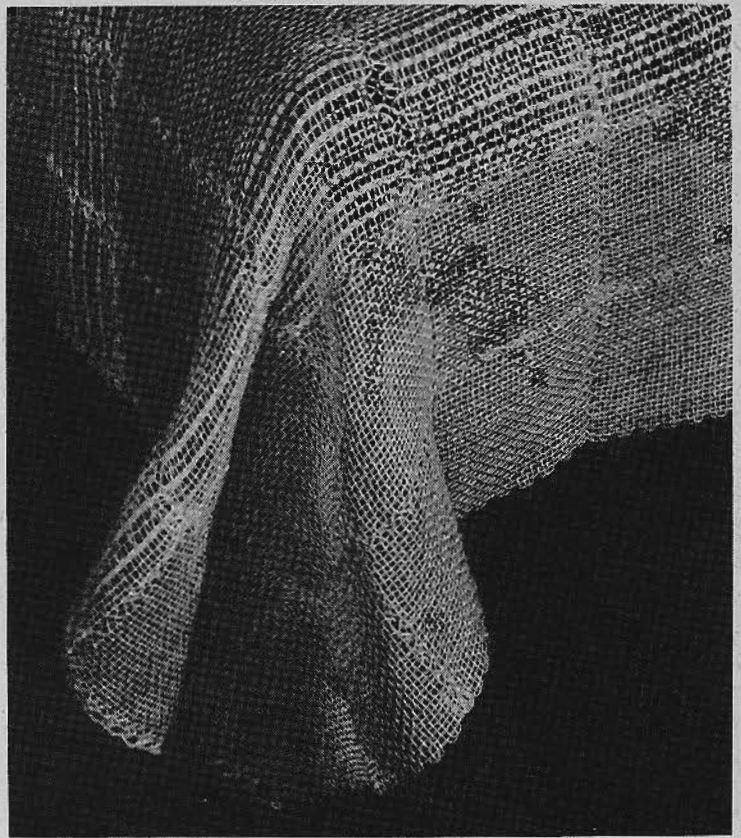


Linen Squares

The third stitch is taken in the third bump of the first square, the fourth stitch in the fourth bump of the opposite square, and so on for the length of the seam. (This means that you are crossing diagonally from one side of the seam to the other leaving every other bump on both sides.) Now go back over the seam taking your stitches in the bumps that were skipped before. This makes a very firm and decorative seam made up of long narrow crosses.

Light linen squares joined in this way with a darker or contrasting shade are very effective.

If you are sewing a long seam you should measure off enough thread to sew only one way at a time. Very large pieces can be joined in sections and then the sections joined later.

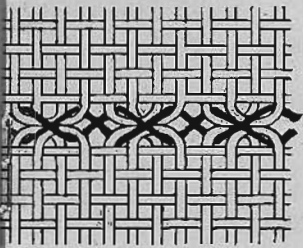


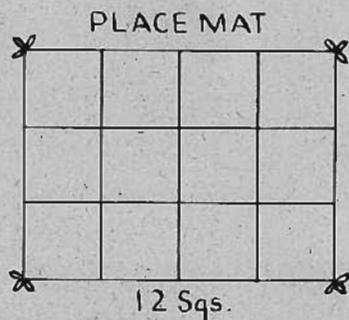
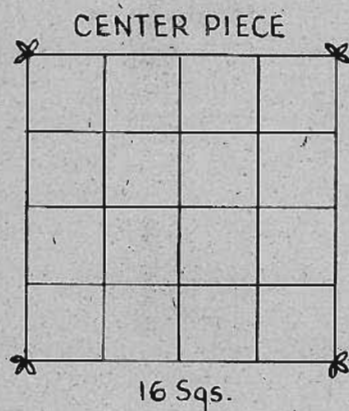
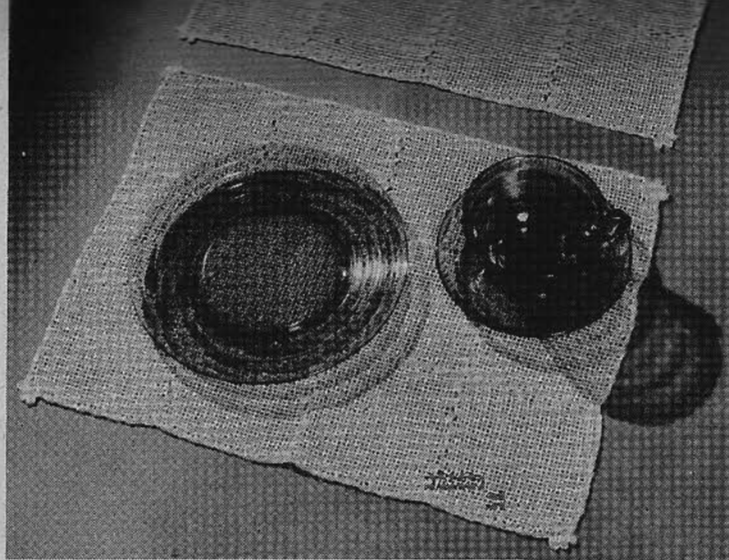
Bed Spread

EQUIPMENT AND MATERIALS

1 WEAVE-IT
36 OZ. LINEN FLOSS

Weave 450 regular squares and 100 triple rib panel squares (as shown in Weave-It Weaves booklet). Assemble. Loop crochet around edge. This makes a 90 x 100 bedspread.





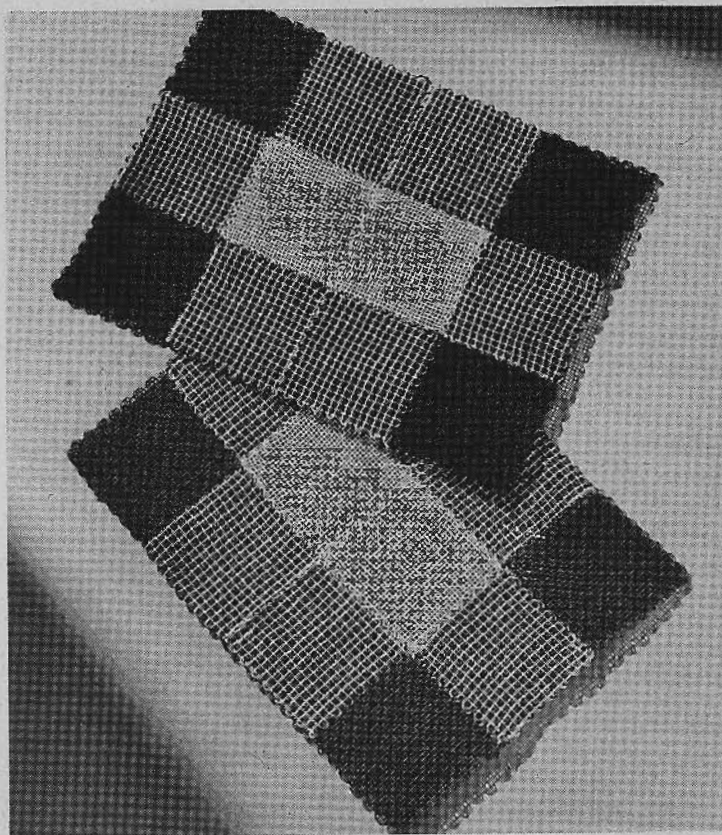
EQUIPMENT AND MATERIALS

1 WEAWE-IT

3 2-OZ. SPOOLS LINEN FLOSS

Weave 88 squares, being sure to even the edges very carefully before removing from the frame. Assemble as shown in the diagram, making one centerpiece and six doilies. Finish edges with one row single crochet making three piquots at each corner.

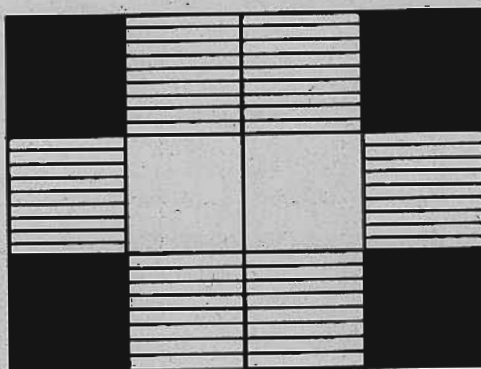
Luncheon Set...



EQUIPMENT AND MATERIALS

- 1 WEAVE-IT
- 2 2-OZ. SPOOLS TAN LINEN FLOSS
- 2 2-OZ. SPOOLS BROWN LINEN FLOSS

Weave 28 brown squares, 42 brown and tan squares and 14 tan squares. Assemble as shown in Diagram, making one center piece and six doilies. Press.



12 Sqs.

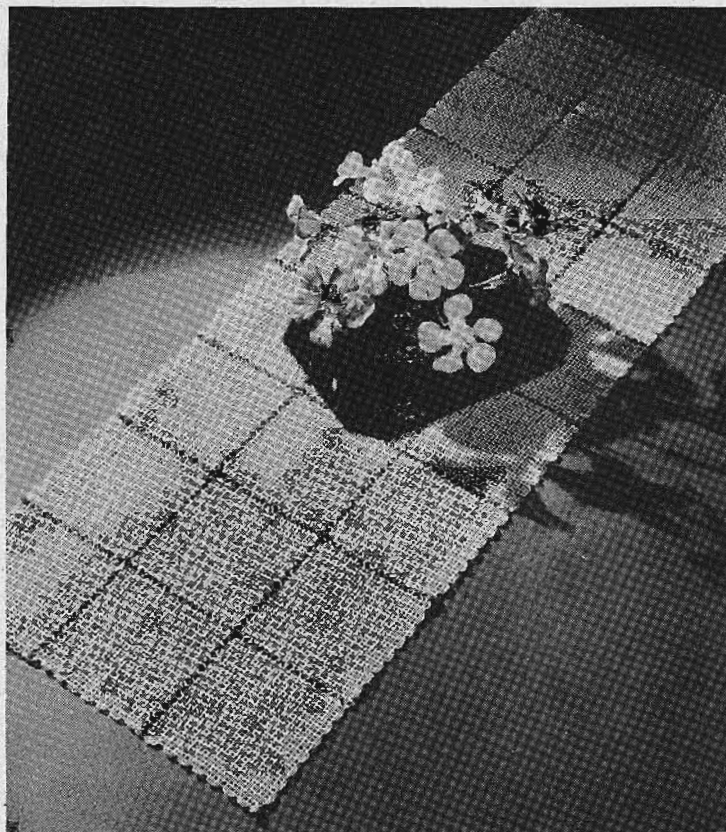
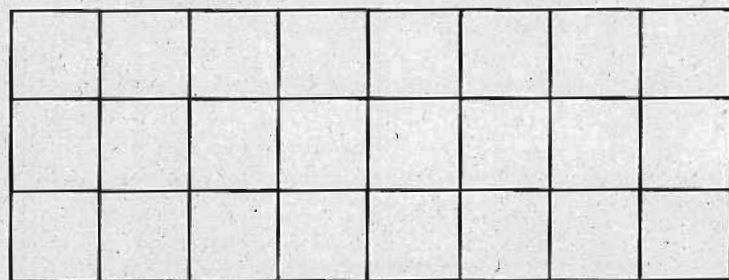


Table Runner



24 Sqs.

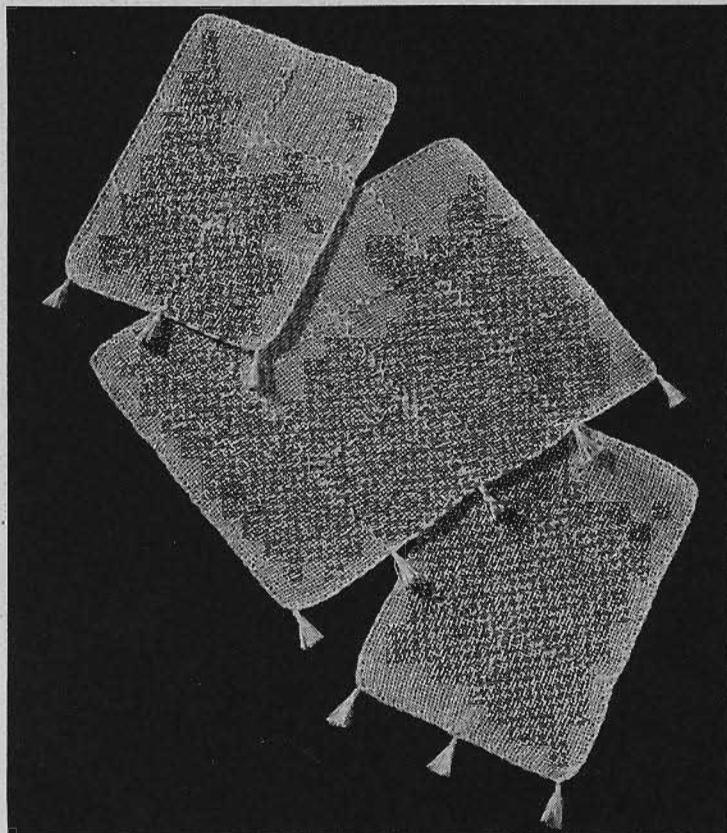
EQUIPMENT AND MATERIALS

1 WEAVE-IT

1½ oz. LINEN FLOSS

Weave 24 squares of linen floss and sew together with a contrasting or blending shade of yarn. Be sure edges of squares are even before removing from Weave-It.

Chair Set...



EQUIPMENT AND MATERIALS

1 WEAVE-IT

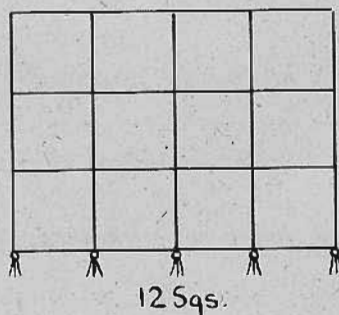
1 2-OZ. SPOOL LINEN FLOSS

Weave 24 squares, being sure to even the edges of each very carefully before removing from frame.

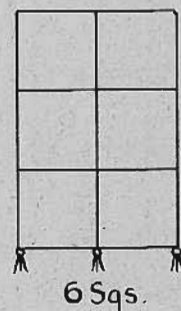
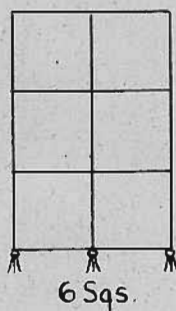
Assemble as shown in the diagram. Finish edges with one row of single crochet.

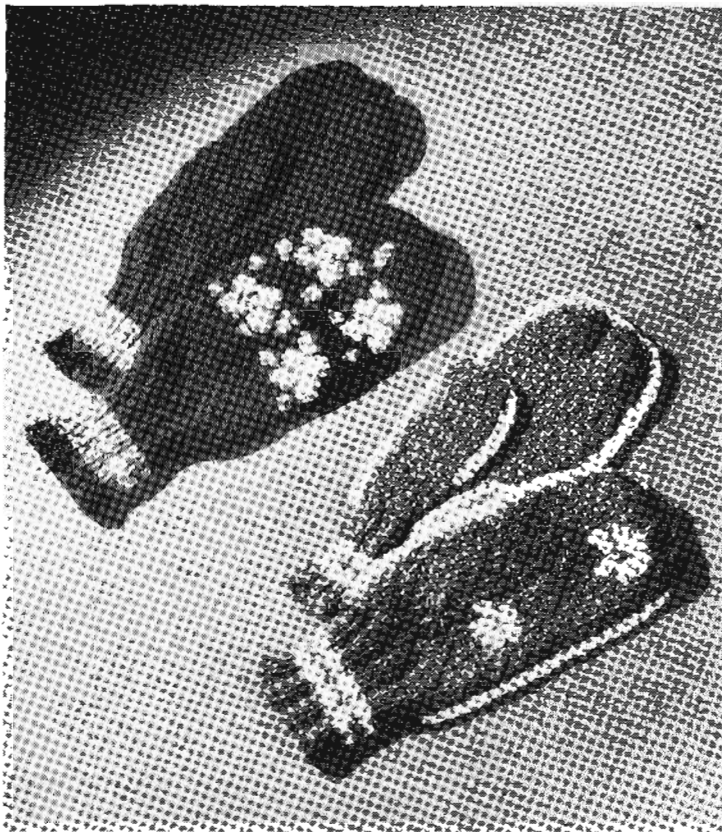
The lower edge of the chair back and front edges of the arm pieces may be finished further with small tassels or a fringe of the same material.

CHAIR BACK



ARM PIECES



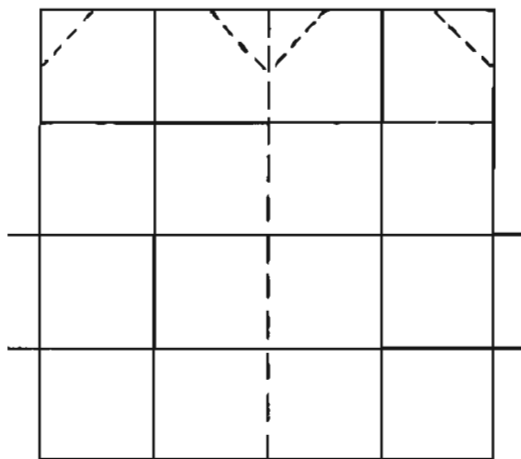


Mittens..

EQUIPMENT AND MATERIALS

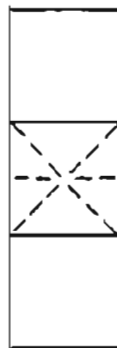
- 1 JUNIOR WEAVE-IT
- 1 OZ. KNITTING WORSTED
- 1 PR. NO. 3 KNITTING NEEDLES

Weave thirty-six Junior squares. Assemble as shown in diagram leaving an opening on one square on the outside edge of each mitten. To make thumb sew three squares together. Fold in half on the dotted line. Sew up both sides leaving the bottom open and gathering the top. Insert thumb into the opening in the main part of the mitten and sew on. At the bottom of the mitten pick up approximately thirty-two stitches and knit 2, purl 2 for cuff making it any desired length. Embroider a flower on the middle of each of the four squares on the back of the mitten. Fold in half the wrong way making sure that the thumb is in the correct position. Sew up side and top gathering the top as much as possible. Turn right side out and press.



16 Sqs.

THUMB



3 Sqs.

For crocheted edge mitten. Weave thirty-six Junior squares using the weave on p. 19 of the Weave-It Weaves Booklet. Assemble as shown in diagram for regular mitten. When making thumb, instead of sewing together, crochet one row single crochet around outside edge gathering in at the top. Insert thumb the same as regular mitten. Knit cuff and fold the long way and single crochet one row all around the outside edge of the mitten. Embroider lazy daisies in any desirable place on the back. Press. Shetland Floss is preferred for the embroidery and crocheting.

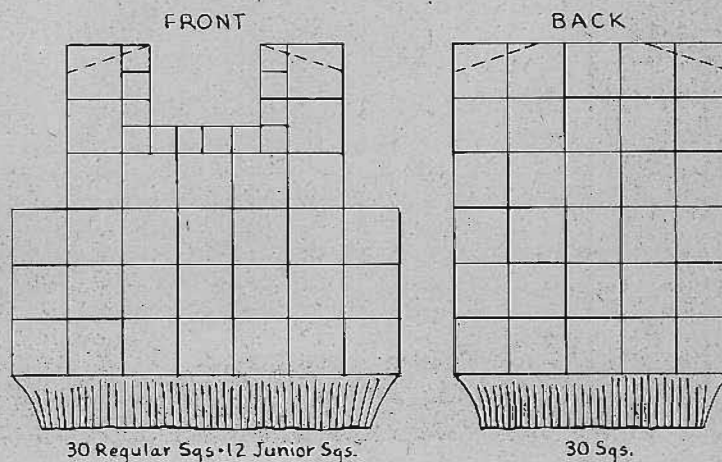
Boys' Sweaters

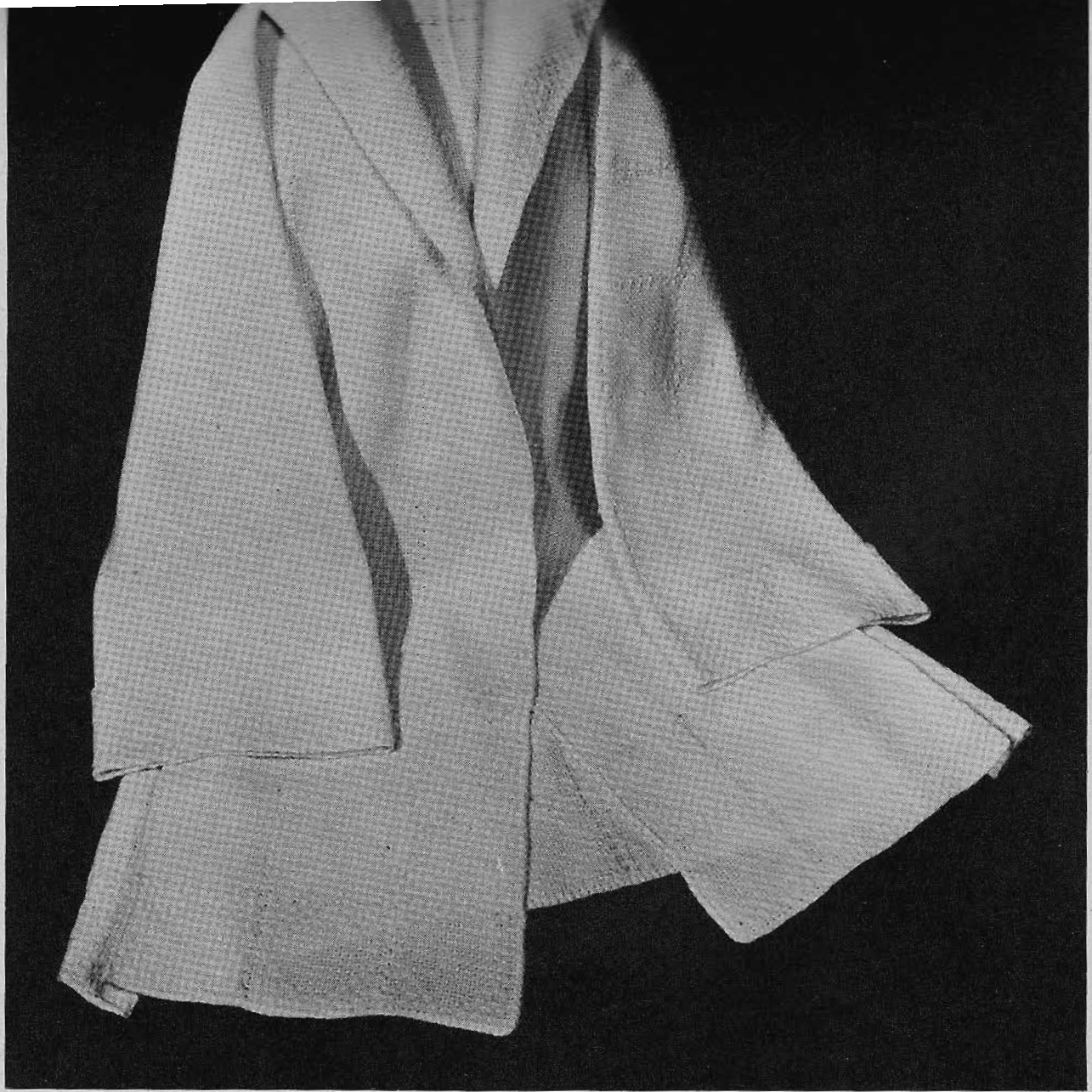


EQUIPMENT AND MATERIALS

- 1 WEAVE-IT—4"
- 1 JUNIOR WEAVE-IT—2"
- 8 OZ. SCOTCH KNITTING WORSTED

Weave 60 regular squares and 12 junior squares. Assemble as shown in the diagrams. Sew front to back at shoulder making a slanting seam as shown. Single crochet around neck, and armholes and bottom of sweater. With No. 5 knitting needles pick up 94 stitches on front between center sides and k. 2 p. 2 for 20 rows. Bind off. Repeat on back. Sew sides together. Press well. A smaller size may be made by substituting Junior sqs. under the arm.





[24]

Coat...

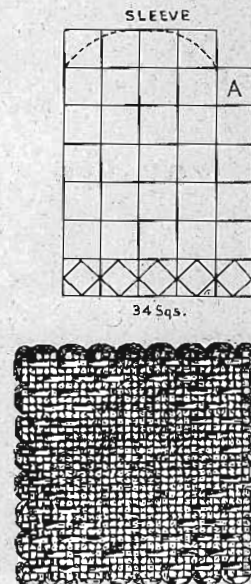
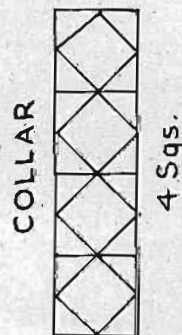
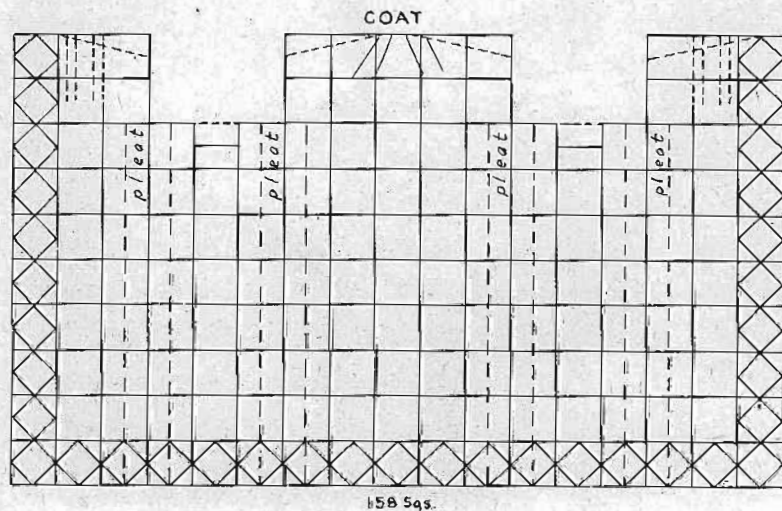
EQUIPMENT AND MATERIALS

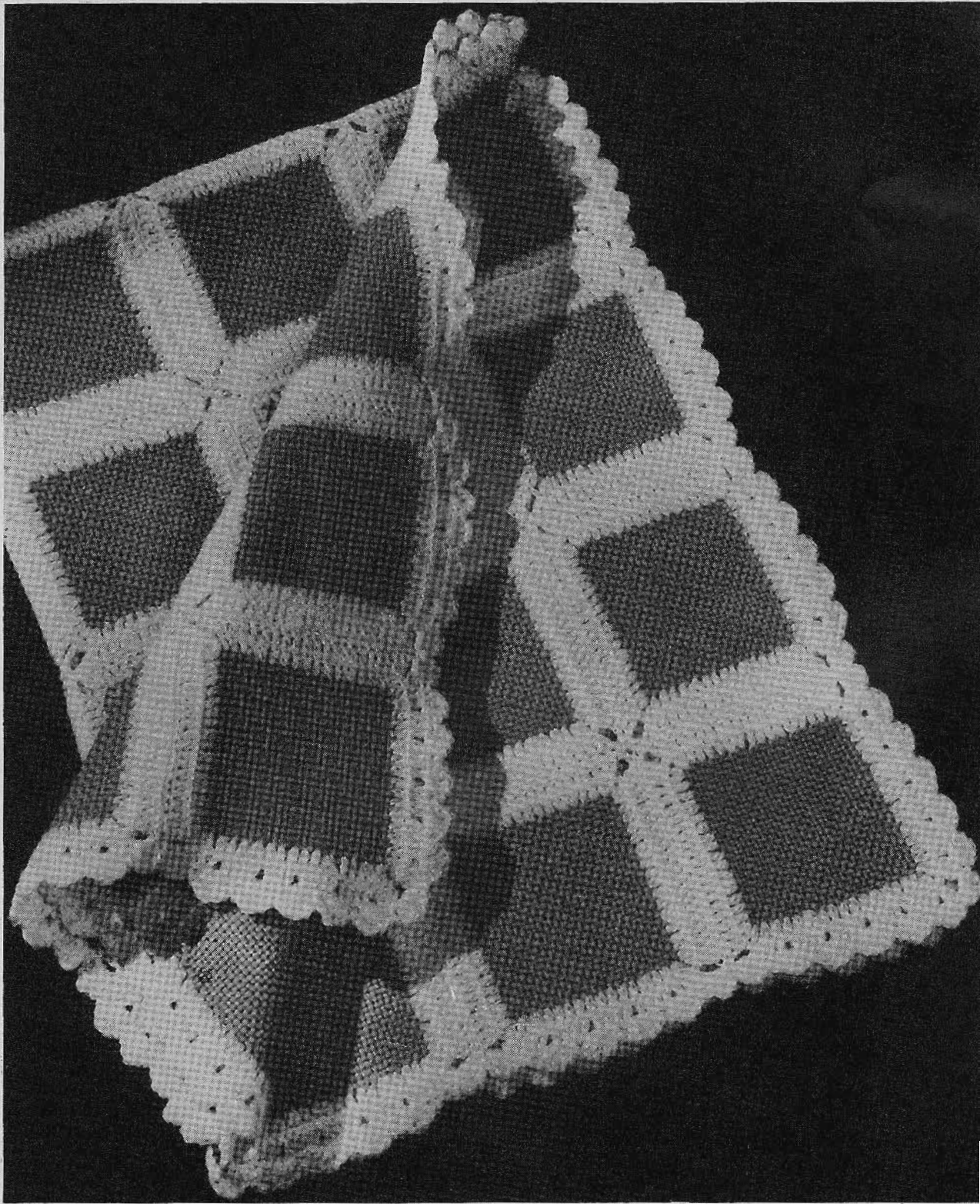
1 WEAVE-IT No. 1000

19 oz. GERMANTOWN, WHITE

Weave 230 squares (182 plain and 48 with Sunken Diamond, as shown in the Weave-It Weaves Booklet). Assemble as shown in diagram. Press with damp cloth. Stitch in inverted pleats on shoulder in fronts. Stitch fronts to back with a sloping seam as shown. Baste and stitch in darts in back so that the back between the seams is one square wide. This will be uneven, but will not show when the collar is sewed over it. The collar is folded double. Underarm the extra squares on either side of the half square form pleats when folded under and tacked. The underarm half square is a regular square which is sewed up halfway on each side.

Tack down loose half after sleeve is sewed in. Sew sleeve together and pin into armhole matching the square A to the half square and pin the middle joining of the four squares at the top of the sleeve to the shoulder seam. Pin sides sloping them down to armhole. Ease all fullness to the top. This will leave points extending beyond seam. Sew or stitch around armhole. If points are to be trimmed off, the seam must be stitched to insure against raveling. Stitch once again beyond seam before trimming. Points can be tacked back into sleeve. Crochet around cut edges or bind. Press well each piece before the final assembling.





Afghan . . .

EQUIPMENT AND MATERIALS

1 WEAVE-IT

48 SQUARES—1½ HANKS BLUE 4 FOLD AFGHAN YARN (\$3.75 OZ. EA.)

BORDER—5 OZ. WHITE SHETLAND

1 NO. 4 WHITE BONE CROCHET NEEDLE

Take one blue block and by using the loops (made by the Weave-It) around the edge, start the border. There are seventeen (17) loops across one side. In the first loop fasten your yarn. Chain three and make one double crochet.

* 1 d-cr. in each of the next four loops; 2 d-cr. in the next loop (6th); 1 d-cr. in each of the next five loops; 2 d-cr. in the next loop (12th); 1 d-cr. in each of the next 4 loops and 2 d-cr. in the last loop; chain 1, turn corner. 2 d-cr. in the first loop (of second side) and repeat from asterisk. (*)

Complete the four sides and at last corner slip stitch the work together, chain three and d-cr. in the first post. *Make one d-cr. in the

top of each post across the side, making 2 d-cr. in the last post; chain 2 and turn the corner; 2 d-cr. in the first post on second side. Repeat from *. Complete the block.

If these finished blocks are laid flat and over-whipped, there will be no right or wrong side to the cover. Be sure to connect the corners in the center of the two chains, thus making the small design uniform over the entire cover.

The edge of shell stitch is made by 6 d-cr. in the corner opening; slip stitch to the top of second post; 6 d-cr. between 4th and 5th post; slip stitch to top of 6th post. 6 d-cr. between 8th and 9th post, etc. to complete the edge.



Flat, Collar and Bag

EQUIPMENT AND MATERIALS

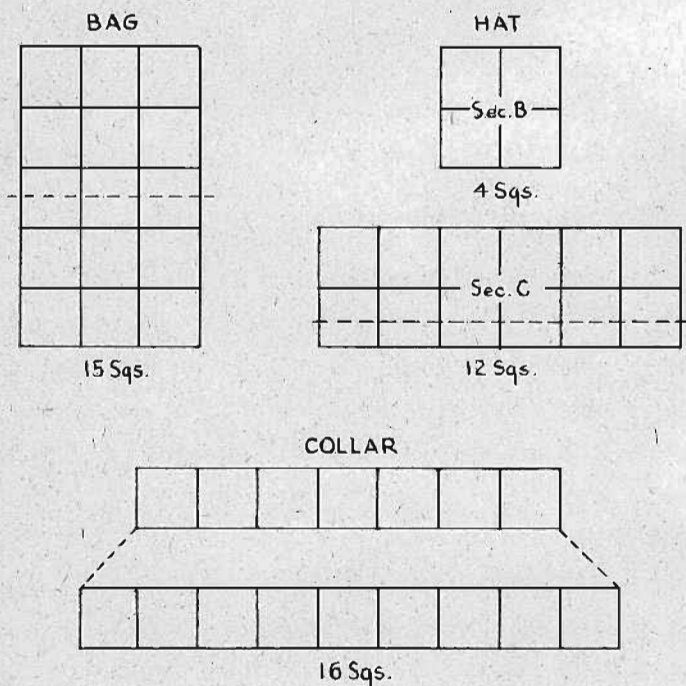
1 WEAWE-IT

4 OZ. BOUCLE WOOL

1 PR. WOODEN HANDLES

HAT: Sew the end edges of the 12 sqs. together, making a headband. Turn up the lower row sq. double. This band may be made smaller by taking a bigger seam. Pin the 4 sqs. over the opening at the top, having the joinings of the sqs. between the corners come to the upper edge of the band at equal distances. Gather the edges between the corners so that the corners will lie flat against the band. Sew. Press.

COLLAR: Weave and sew together one strip of 9 regular squares and one strip of 7 squares. Ease strip of 7 into strip of 9. Crochet around neck taking in all fullness so that the collar will lie flat like a fan. Continue crocheting around edge. Press. Put on button and loop.



Pin Cushion

EQUIPMENT AND MATERIALS

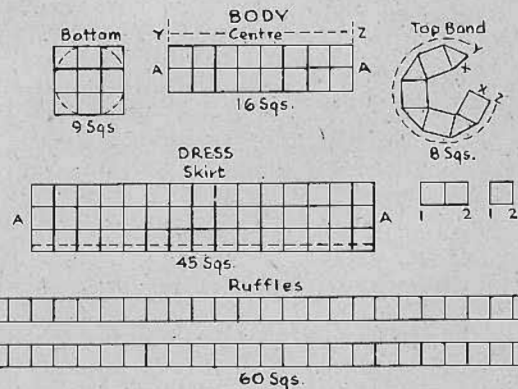
1 JUNIOR WEAVE-IT
1 OZ. OF GERMANTOWN
2 OZ. OF POMPADOUR
1 PIECE OF ROUND CARDBOARD,
COTTON STUFFING
1 CELLULOID DOLL

DRESS

For waist, make 2 squares for the front and one for the back. Join at lower corners, 1 and 1 and 2 and 2 leaving the rest open. For skirt, assemble three rows of 15 each and two single rows of 30 each for ruffles. Join edges A and A—B and B—C and C. Gather lower ruffle and sew on skirt foundation at dotted lines. Sew on upper ruffle in like manner so that it overlaps the top of lower ruffle. Gather the top of the skirt and sew to lower edge of waist where it is joined. Run a piece of yarn through the two upper edges of waist and tie around the doll's neck.

BODY

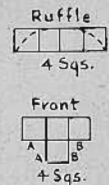
Weave 33 squares. Assemble 9 for bottom, two rows of 8 for center and one row of 8 for top as shown in diagram. Sew edges of Center-A—A together and attach to bottom, sewing across center of corner squares to form circle. Cut circle of cardboard 5" in diameter and place in bottom. Assemble top row with every other square three-cornered. Attach to the others, sewing across center of three-cornered squares. Set doll inside and fill in around her with cotton batting. Run yard through top and tie around middle of doll.



POKE BONNET

Assemble four squares joining edges A—A and B—B. For ruffle, assemble 4 squares—sew to front of bonnet fulling across the top. Turn edges in as shown in dotted line to form poke effect. Run a piece of yarn through lower edge of bonnet and tie under doll's chin.

POKE BONNET



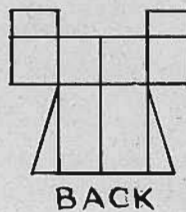
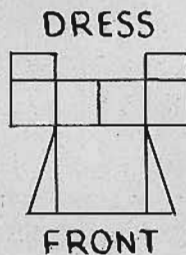
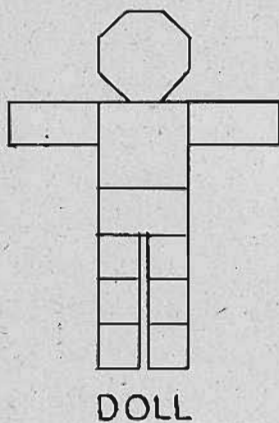


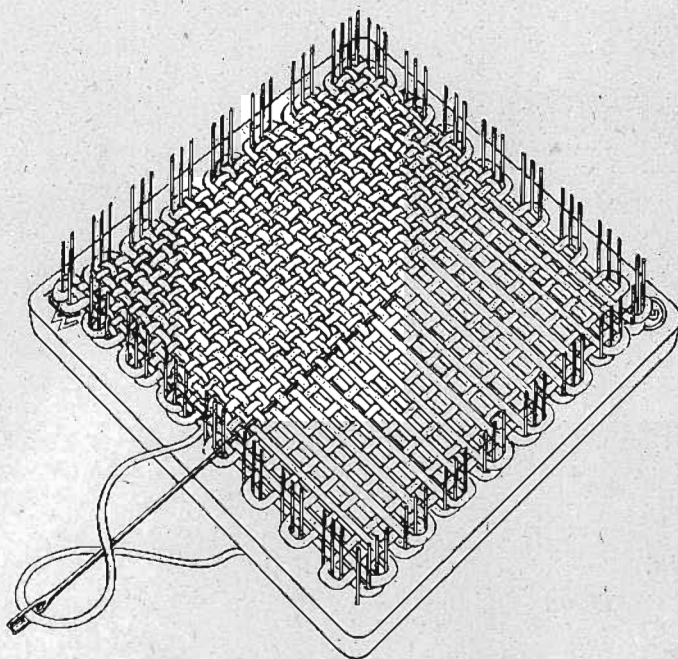
Doll...

EQUIPMENT AND MATERIALS

- 1 WEAWE-IT
- 1 JUNIOR WEAWE-IT
- 1 OZ. FLESH COLOR GERMANTOWN ZEPHR
- ½ OZ. BLUE SHETLAND FLOSS
- ½ OZ. WHITE SHETLAND FLOSS
- ½ OZ. YELLOW GERMANTOWN ZEPHYR
- ½ YD. RED GERMANTOWN OR SHETLAND
- 6 YDS. BLACK GERMANTOWN ZEPHR

Weave nine regular Weave-It squares of the flesh colored yarn and four Junior squares of black. Sew together the body, head, arms and legs all separately as indicated in the diagram. The head requires two regular squares sewn or stitched together head shaped leaving the neck open for stuffing. Turn head inside out and press. The features should be embroidered on the face before stuffing. Assemble the other members of the doll body and stuff and attach arms, legs and head to the body. The hair is made by small loops of the yellow yarn all over the head as desired.





WEAVE-IT

Every Weave-It from the De Luxe model with its shiny Bakelite frame and stainless monel metal pins to the two-inch Junior Weave-It wooden frame is made to stand long use and abuse.

Every Weave-It has the patented Weave-It grouping of pins that makes it so easy to use. Your dealer will gladly show you the different Weave-It models and the advantages of a genuine Weave-It frame.

		<i>Price</i>
DE LUXE WEAVE-IT	(out for the duration)	4" sq. 1.50
NO. 1000 WEAVE-IT	4" sq. 1.10
NO. 1050 WEAVE-IT	2" sq. .50
NO. 1150 RUG WEAVE-IT	5" sq. 1.25
WEAVE-IT WEAVES BOOKLET15

REPLACEMENT NEEDLES

JUNIOR WEAVE-IT NEEDLES	3 1/2" .15
REGULAR WEAVE-IT NEEDLES	6" .25
RUG WEAVE-IT NEEDLES	8" .25

D O N A R P R O D U C T S C O R P .
M E D F O R D M A S S A C H U S E T T S

T H E R E I S O N L Y O N E G E N U I N E W E A V E - I T