

JIFFY-LOOM

BOOK OF

Novelty Weaving



ORIGINAL IDEAS
and
PATTERNS

PRICE TEN CENTS

COPYRIGHT 1942 CALCRAFT CO

The Advantages of

WEAVING WITH THE JIFFY LOOM ARE MANY...

Only with the JIFFY LOOM is it possible to weave the many beautiful and exclusive patterns described in this book because they were originated and designed just for the JIFFY LOOM.

SAVES MATERIAL. Actual tests have been shown that the cost of material for articles woven on the JIFFY LOOM is one-third to one-half LESS than knitting or crocheting.

SAVES TIME. It is surprising how much faster one can weave with the JIFFY LOOM than by any other method.

SMARTER EFFECTS CAN BE OBTAINED with the JIFFY LOOM because of the greater number of useful sizes of blocks it is possible to make with just one loom—with the use of the ADJUSTA-BAR, FOUR sizes may be made with the 4" loom, ELEVEN sizes with the 8" loom.

IT IS PRACTICAL. Articles made with JIFFY LOOM will neither sag nor stretch nor lose their shape.

IT IS INEXPENSIVE. Because of the great number of JIFFY LOOMS produced by the CALCRAFT COMPANY it is possible for them to offer their products at these surprisingly low prices.

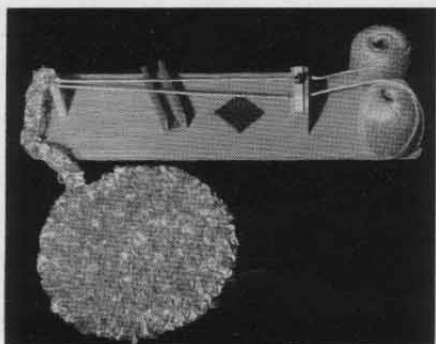
PRICE LIST

No. 201—2x2" Junior JIFFY LOOM with needle.....	\$.15	No. 1610—3/2" Round Needle (for joining blocks).....	.05
No. 301—2x4" JIFFY LOOM with needle.....	.20	No. 1700—JIFFY LOOM Book of Novelty Weaving.....	.10
No. 401—4x4" JIFFY LOOM with needle.....	.25	No. 1800—JIFFY LOOM 4" fibre teeth.....	.05
No. 401A—ADJUSTA-BAR. By using this, 1x4", 2x4" 3x4", 4x4" blocks can be woven on the No. 401.....	.10	No. 2000—Jute Rug Warp (3 oz. Ball).....	.15
No. 601—2x8" JIFFY LOOM with needle.....	.30	No. 2001—HOLLYWOOD ROLLERLESS RUG LOOM (Junior).....	.25
No. 701—4x8" JIFFY LOOM with needle.....	.35	No. 2002—HOLLYWOOD ROLLERLESS RUG LOOM (Std.).....	.50
No. 801—4x8" JIFFY LOOM with needle, 2 ADJUSTA-BARS for weaving ELEVEN different sizes of blocks.....	.50	No. 2501—HOLLYWOOD ROLLERLESS RUG LOOM (Deluxe Model —See illustration).....	1.00
No. 820—8x8" JIFFY LOOM with 10" needle.....	1.00	No. 3100—PUFF BALL LOOM.....	.15
No. 1101—HOLLYWOOD WEAVING SET (See illustration).....	1.00	No. 6100—LUNCHEON SET LOOM (for weaving or tying).....	1.00
No. 1500—HOLLYWOOD YARN REEL (Adjustable).....	.75		
No. 1600—6" JIFFY needle.....	.05		

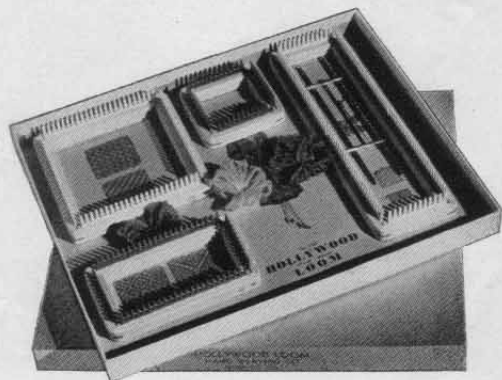
COMPLETE DIRECTIONS ARE INCLUDED WITH EACH OF THE ABOVE ITEMS

NOTE:—ADDRESS ALL MAIL ORDERS TO: CALCRAFT COMPANY, P. O. BOX No. 527, Hollywood, California.

Postage is prepaid on mail orders of 50c or more, however, on purchases of less than 50c, kindly enclose 5c to cover cost of packing and shipping. (Prices subject to change without notice.)



NO. 2501 HOLLYWOOD ROLLERLESS RUG LOOM (Deluxe Model). This beautiful rug loom made on a solid California Redwood base, includes a Redwood cutter gauge, enabling you to make exquisite rugs from cast-off silk and woolen materials, or yarn may be used if desired. We recommend our No. 2000 Jute Rug Warp, which is the finest obtainable warp for this purpose.



NO. 1101 HOLLYWOOD WEAVING SET. This set comes complete with four different sizes of looms, one 6" steel needle, one 4" steel needle, and one 3/2" needle, three swatches of yarn and complete directions.

INTRODUCTION

Our purpose in compiling this book is to give a complete and concise set of patterns and designs which will make your JIFFY LOOM an article of everlasting pleasure and enjoyment.

We show many beautiful designs in Primary Weaving and in addition, give you our original process of Novelty Weaving on the JIFFY LOOM—a method by which an almost endless variety of clever, attractive designs of hand-weaving may be obtained which have never before been possible on any hand loom.

A sketch of each pattern and model is also shown in order to make weaving easier and faster and eliminate any possibility of error. The use of photographs of actual models made on the JIFFY LOOM enables you to see exactly how your finished product will appear without having to visualize the results from a flat pattern.

GENERAL INSTRUCTIONS

1. READ CAREFULLY THE DIRECTION SHEET INCLUDED WITH EACH JIFFY LOOM and learn the method of PRIMARY WEAVING as shown. After mastering the Primary Weave, it will be easy to go into the NOVELTY or DESIGN Weaving. However, read the points given at the bottom of Page 6 of this book before beginning to weave a Novelty Pattern.
2. Due to variations in types of yarn, it is necessary to experiment with the tension of the thread while threading the loom. If the tension is too great, difficulty will be experienced in weaving the last few rows of the block and may even cause the teeth of the loom to bend or break. Different tensions of threading will also produce different sizes of blocks. It is therefore essential that the loom be threaded with just enough tension to keep the thread from slipping off the teeth, and this tension should be as uniform as possible in all of the blocks. Do not be alarmed if the spaces between the threads look too large, as they will close up immediately when the block is removed from the loom.
3. When the weaving is started from side "B," the finish is UNDER OUTSIDE LOOPS on side "D"; when the weaving is started from side "D," the finish is OVER OUTSIDE LOOPS on side "B."
4. The last row of weaving is always next to the teeth along side "A." If this row is omitted, there will be a continuous loop along this side when the block is removed from the loom, thus spoiling the block.
5. When contrasting colors are desired in one block of Novelty Weaving, thread the loom with one color and tie on the second color at the point where the thread will start through for the weaving. It will be found more satisfactory to use the heavier or darker color for threading, thus causing the design to show against a darker background.
6. Be careful to keep all blocks in a pile with the same side up and the same edges together, as side "A" should be fastened to side "C" of another block and side "B" should be fastened to side "D." It might even be well to mark side "A" of all blocks with a small pin for easier identification.
7. The methods used in joining blocks will be found in the JIFFY LOOM Direction Sheet which is included with each JIFFY LOOM.
8. Any of the designs shown in this book may be adapted to the various sizes of the JIFFY LOOMS. In the 4x8" block the pattern is doubled; to reduce the size of the pattern, allow eight threads for every inch of pattern desired and add one thread. For example: a 2" square block will require 8+8+1 or seventeen threads each way; a 2x4" block will therefore have seventeen threads one way and 8+8+8+8+1, or thirty-three threads the other way.
9. The horizontal lines on the patterns for Novelty Weaving indicate OVER stitches and the vertical lines indicate UNDER stitches. Therefore a line showing two squares horizontal, one square vertical, and two squares horizontal would be interpreted—OVER two, UNDER one, OVER two, or: O2, U1, O2. The abbreviation of "O" for OVER and "U" for UNDER is used in all patterns shown in this book.

Original patterns and designs or copies should be first laid out on graph paper, such as may be purchased at any stationery store, numbering each row so as to make it easier to follow the pattern. In this way any design may be woven on the JIFFY LOOM.

Complete instructions for the weaving of any type of block suggested for use in the making of models shown in this Pattern Book will be found on Pages 4, 5, 7 and 8.

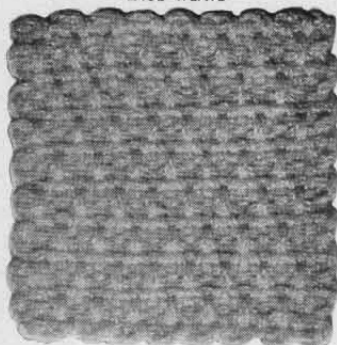
NOTE

If you are using the 4x4" JIFFY LOOM and the pattern being followed requires blocks in the following sizes: 1x4", 2x4", or 3x4", it would be advisable to purchase our No. 401-A ADJUSTA-BAR, which may be obtained from your Dealer for 10c.

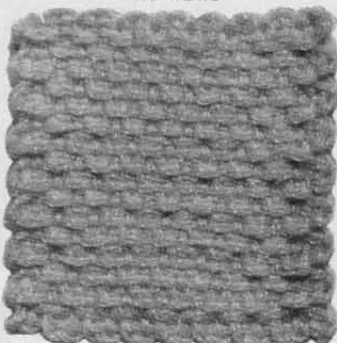
On the opposite page will be found a description of the various sizes of JIFFY LOOMS as well as other CALCRAFT products which have been especially designed to make your hand-craft work easier and more enjoyable.

CALCRAFT COMPANY is pleased to receive correspondence from its many users of JIFFY LOOMS and other CALCRAFT products. A stamped, self addressed envelope will bring a prompt reply to any of your problems or suggestions.

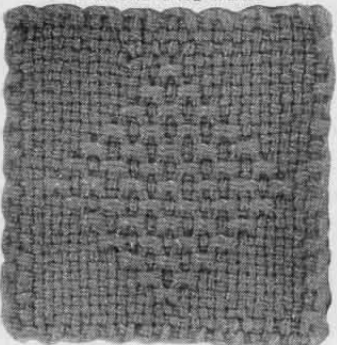
LACE WEAVE



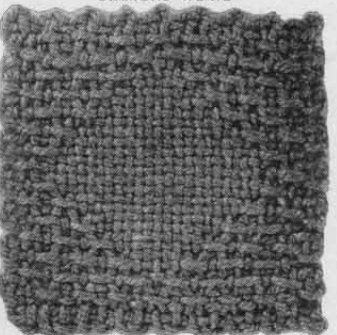
RUFF WEAVE



DIAMOND LACE WEAVE



DIAMOND WEAVE



PRIMARY WEAVES

LACE WEAVE

Row 1—Plain weaving, U1, O1, entire row.
 Row 2—O1, U3, O1, U3, O1, U3, O1, etc., ending U3, O1.
 Row 3—Plain weaving (entire row).
 Row 4—O1, U1, O1, U3, O1, U3, O1, U3, etc., ending U3, O1, U1, O1.
 Repeat rows in order given, ending with row of Plain Weaving NEXT TO TEETH on Side A.

To REVERSE PATTERN so corners of blocks may be matched in joining:
 Row 1—Plain Weaving.

Row 2—O1, U1, O3, U1, O3, etc., ending O3, U1, O1, U1, O1.

Row 3—Plain Weaving.

Row 4—O1, U1, O1, U1, O3, U1, O3, U1, etc., ending O3, U1, O1.

Repeat rows in order given for complete square, the last row being plain weaving NEXT TO TEETH on side A.

RUFF WEAVE

Row 1—Plain Weaving, U1, O1, entire row.
 Row 2—O1, U3, O1, U3, etc., entire row, ending U3, O1.
 Row 3—U1, O1, U3, O1, U3, O1, U3, O1, etc., ending U3, O1, U1, O1, U1.
 Repeat Rows 2 and 3 to last row, which is Plain Weaving NEXT TO TEETH on Side C.

To REVERSE PATTERN so that corners of blocks may be matched in joining:

Row 1—Plain Weaving.

Row 2—O1, U1, O3, ending U1, O1, U1, O1.

Row 3—U1, O3, ending O3, U1.

Repeat rows 2 and 3 until square is woven, ending with a row of plain weaving NEXT TO TEETH on Side A.

DIAMOND LACE WEAVE

Row 1—Plain Weaving U1, O1, entire Row, U Loop.
 Row 2—O1, U1, O3, U1, O3, entire Row finishing U1, O1, U1, O Loop.
 Row 3—U1, O3, U1, O3, entire Row, finishing U1, O3, U Loop.
 Row 4—O1, U1, O3, U1, O3, U1, O3, U1, O1, U1, O1, U1, O3, U1, O3, U1, O3, U1, O1, U1, O Loop.
 Row 5—U1, O3, U1, O3, U1, O3, U1, O1, U1, O1, U1, O1, U1, O1, U1, O3, U1, O3, U1, O3, U Loop.
 Row 6—O1, U1, O3, U1, O3, U1, O1, U1, O1, U1, O1, U1, O1, U1, O1, U1, O1, U1, O3, U1, O3, U1, O1, U1, O Loop.
 Row 7—U1, O3, U1, O3, Under and Over 17 Stitches, O3, U1, O3, U Loop.
 Row 8—O1, U1, O3, Under and Over 21 Stitches, O3, U1, O1, U1, O Loop.
 Row 9—U1, O3, Under and Over 25 Stitches, O3, U Loop.
 Rows 10, 11, 12, 13, 14, 15 and 16—Same as Rows 8, 7, 6, 5, 4, 3 and 2.
 Row 17—Plain Weaving NEXT TO TEETH along Side A.

To REVERSE PATTERN so corners of blocks may be matched in joining:

Row 1—Plain Weaving entire Row.

Row 2—O1, U1, O1, U3, O1, U3, O1, U3, O1, U3, O1, U3, O1, U3, O1, U3, O1, U3, O1, U1, O Loop.

Row 3—U3, O1, U3, O1, U3, O1, U3, O1, U3, O1, U3, O1, U3, O1, U3, O1, U3, O1, U Loop.

Row 4—O1, U1, O1, U3, O1, U3, O1, U3, O1, U1, O1, U1, O1, U3, O1, U3, O1, U3, O1, U1, O Loop.

Row 5—U3, O1, U3, O1, U3, O1, U1, O1, U1, O1, U1, O1, U1, O1, U3, O1, U3, O1, U3, O1, U Loop.

Row 6—O1, U1, O1, U3, O1, U3, O1, U1, O1, U1, O1, U1, O1, U1, O1, U1, O1, U1, O1, U1, O3, O1, U3, O1, U1, O Loop.

Row 7—U3, O1, U3, Over and Under 17 Stitches, U3, O1, U3, O1, U Loop.

Row 8—O1, U1, O1, U3, Over and Under 21 Stitches, U3, O1, U1, O Loop.

Row 9—U3, Over and Under 25 Stitches, U3, O1, U Loop.

Rows 10, 11, 12, 13, 14, 15 and 16—Same as Rows 8, 7, 6, 5, 4, 3 and 2.

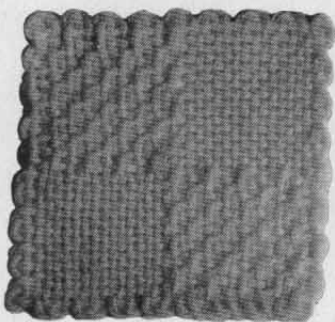
Row 17—Plain Weaving NEXT TO TEETH along Side A.

DIAMOND WEAVE

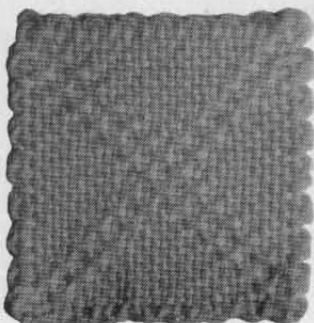
Row 1 and 2—Plain Weaving, U1, O1, entire row.
 Row 3—Over St. 16, 17, 18. Balance of row Plain Weaving.
 Row 4—Over St. 13, 14, 15, U16, Over St. 17, 18, 19.
 Row 5—Over St. 12, 13, 14, U15, Over St. 16, 17, 18, U19, Over St. 20, 21, 22.
 Row 6—Over St. 9, 10, 11, U12, Over St. 13, 14, 15, U16, Over St. 17, 18, 19, U20, Over St. 21, 22, 23.
 Row 7—Over St. 8, 9, 10, U11, Over St. 12, 13, 14, U15, Over St. 16, 17, 18, U19, Over St. 20, 21, 22, U23, Over St. 24, 25, 26.
 Row 8—Over St. 5, 6, 7, U8, Over St. 9, 10, 11, U12, Over St. 13, 14, 15, U16, Over St. 17, 18, 19, U20, Over St. 21, 22, 23, U24, Over St. 25, 26, 27.
 Row 9—(Center Row) Over St. 4, 5, 6, U7, Over St. 8, 9, 10, U11, Over St. 12, 13, 14, U15, Over St. 16, 17, 18, U19, Over St. 20, 21, 22, U23, Over St. 24, 25, 26, U27, Over St. 28, 29, 30.

Repeat Rows 8, 7, 6, 5, 4, 3 and 2, ending with row of Plain Weaving NEXT TO TEETH on Side A.

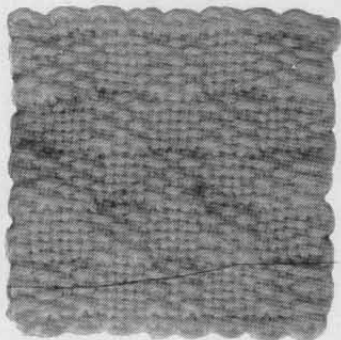
DOUBLE BOX WEAVE



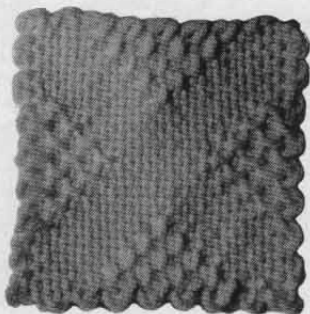
CRISS CROSS WEAVE



COAT WEAVE



GARDEN PATH WEAVE



PRIMARY WEAVES

DOUBLE BOX WEAVE

- Row 1—Under and Over 17 stitches, O3, U1, O3, U1, O3, U1, O3, U Loop.
 Row 2—O1, U1, O3, U1, O3, U1, O3, U1, O3, U Under and Over 15 stitches, O Loop.
 Row 3—Same as Row 1. Row 4—Same as Row 2.
 Row 5—Same as Row 1. Row 6—Same as Row 2.
 Row 7—Same as Row 1. Row 8—Same as Row 2.
 Row 9—U1, O3—Entire Row, U Loop.
 Row 10—Over and Under 18 Stitches, O3, U1, O3, U1, O3, U1, O2 and O Loop.
 Row 11—U1, O3, U1, O3, U1, O3, U1, O3, U Under and Over 16 stitches, U Loop.
 Row 12—Same as Row 10. Row 13—Same as Row 11.
 Row 14—Same as Row 10. Row 15—Same as Row 11.
 Row 16—Same as Row 10.
 Row 17—Same as Row 11—NEXT TO TEETH along Side A.

CRISS CROSS WEAVE

- Row 1—U1, O3, Under and Over 25 Stitches, O3, U Loop.
 Row 2—O1, U1, O3, Under and Over 21 Stitches, O3, U1, O2, O Loop.
 Row 3—U1, O3, U1, O3, Under and Over 17 Stitches, O3, U1, O3, U Loop.
 Row 4—O1, U1, O3, U1, O3, Under and Over 13 Stitches, O3, U1, O3, U1, O1, U1, O Loop.
 Row 5—U1, O1, U1, O1, U1, O3, U1, O3, Under and Over 9 Stitches, O3, U1, O3, U1, O1, U1, O1, U Loop.
 Row 6—O1, U1, O1, U1, O1, U1, O3, U1, O3, Under and Over 5 Stitches, O3, U1, O3, U1, O1, U1, O1, U1, O1, U Loop.
 Row 7—Under and Over 9 Stitches, O3, U1, O3, U1, O3, U1, O3, Under and Over 8 Stitches, U Loop.
 Row 8—Over and Under 10 Stitches, O3, U1, O3, U1, O3, Under and Over 11 Stitches, O Loop.
 Row 9—Under and Over 13 Stitches, O3, U1, O3, Under and Over 12 Stitches, U Loop.
 Row 10—Same as Row 8. Row 11—Same as Row 7.
 Row 12—Same as Row 6. Row 13—Same as Row 5.
 Row 14—Same as Row 4. Row 15—Same as Row 3.
 Row 16—Same as Row 2.
 Row 17—Same as Row 1, NEXT TO TEETH along Side A.

COAT WEAVE

- Row 1—Under and Over entire Row.
 Row 2—O3, U1, O3, U1, O1, U1, O1, U1, O3, U1, O3, U1, O1, U1, O1, U1, O3, U1, O3, U1, O Loop.
 Row 3—U1, O3, U1, O3, U1, O1, U1, O1, U1, O3, U1, O3, U1, O1, U1, O1, U1, O3, U1, O3, U Loop.
 Row 4—O3, U1, O3, U1, O1, U1, O1, U1, O3, U1, O3, U1, O1, U1, O1, U1, O3, U1, O3, U1, O Loop.
 Row 5—U1, O1, U1, O1, U1, O1, U1, O3, U1, O3, U1, O1, U1, O1, U1, O3, U1, O3, U1, O1, U1, O1, U Loop.
 Row 6—O1, U1, O1, U1, O1, U1, O3, U1, O3, U1, O1, U1, O1, U1, O3, U1, O3, U1, O1, U1, O1, U1, O Loop.
 Row 7—U1, O1, U1, O1, U1, O1, U1, O3, U1, O3, U1, O1, U1, O1, U1, O3, U1, O3, U1, O1, U1, O1, U Loop.
 Row 8—O3, U1, O3, U1, O1, U1, O1, U1, O3, U1, O3, U1, O1, U1, O1, U1, O3, U1, O3, U1, O Loop.
 Row 9—U1, O3, U1, O3, U1, O1, U1, O1, U1, O3, U1, O3, U1, O1, U1, O1, U1, O3, U1, O3, U Loop.
 Rows 10, 11, 12, 13, 14, 15 and 16—Same as Rows 8, 7, 6, 5, 4, 3 and 2.
 Row 17—Plain weaving NEXT TO TEETH along Side A.

GARDEN PATH WEAVE

- Row 1—U1, O1, U1, O1, U1, O1, U3, O1, U3, O1, U3, O1, U3, O1, U3, O1, U1, O1, U1, O1, U1, O1, U Loop.
 Row 2—O1, U1, O1, U1, O1, U1, O1, O1, U1, O1, U1, O1, U3, O1, U3, O1, U3, O1, U3, O1, U1, O1, U1, O1, U1, O1, U1, O Loop.
 Row 3—U1, O1, U1, O1, U1, O1, U1, O1, U1, O1, U3, O1, U3, O1, U3, O1, U1, O1, U1, O1, U1, O1, U1, O1, U Loop.
 Row 4—O1, U1, O1, U1, O1, U1, O1, U1, O1, U1, O1, U1, O1, U1, O1, U3, O1, U3, O1, U1, O1, U1, O1, U1, O1, U1, O1, U1, O Loop.
 Row 5—O2, U1, O1, U1, O1, U1, O1, U1, O1, U1, O1, U1, O1, U1, O1, U3, O1, U1, O1, U1, O1, U1, O1, U1, O1, U1, O1, U1, O Loop.
 Row 6—O1, U1, O3, U1, O1, U1, O1, U1, O1, U1, O1, U1, O1, U1, O1, U1, O1, U1, O1, U1, O1, U1, O1, U1, O1, U1, O1, U1, O Loop.
 Row 7—O2, U1, O3, U1, O1, U1, O1, U1, O1, U1, O1, U1, O1, U1, O1, U1, O1, U1, O1, U1, O1, U1, O1, U1, O1, U1, O1, U1, O Loop.
 Row 8—O1, U1, O3, U1, O3, U1, O1, U1, O1, U1, O1, U1, O1, U1, O1, U1, O1, U1, O1, U1, O1, U1, O1, U1, O1, U1, O1, U1, O Loop.
 Row 9—O2, U1, O3, U1, O3, U1, O1, U1, O1, U1, O1, U1, O1, U1, O1, U1, O1, U1, O1, U1, O1, U1, O1, U1, O1, U1, O1, U1, O Loop.
 Rows 10, 11, 12, 13, 14, 15 and 16—Same as Rows 8, 7, 6, 5, 4, 3 and 2.
 Row 17—Same as Row 1, NEXT TO TEETH along Side A.

Jiffy Loom Directions for NOVELTY OR DESIGN WEAVING

The weaving of the Design Patterns shown on Pages 7 and 8 will be made much easier if several plain blocks (OI, UI, OI, Etc.) are woven before attempting to weave your favorite Design Pattern.

READ GENERAL INSTRUCTIONS CAREFULLY

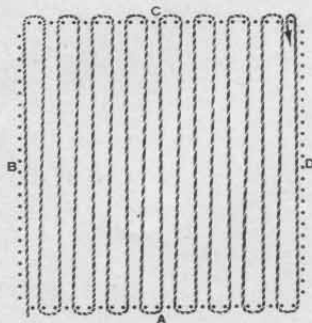


FIGURE 1. First anchor thread in slot on Side A, then pass it to the left, or ahead of the first tooth on Side A. Draw thread across from Sides A to C as in illustration, taking up first two teeth on Side C and leaving one on Side A. **DO NOT DRAW THREAD TOO TIGHTLY.** Take note that each time two teeth are taken in, leaving one. Continue in this manner until the corner of C and D is reached, circle around the outside of this corner tooth putting the thread in position for the 2nd layer of threading.

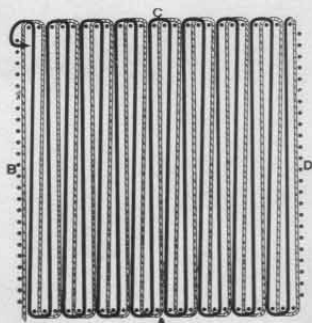


FIGURE 2. Turn loom half around and working from Sides C to A, draw thread around 2nd and 3rd teeth on Side A, following dark line of above illustration. If contrasting color is desired, break at finish of this threading and join new color at this is the point where the weaving starts.

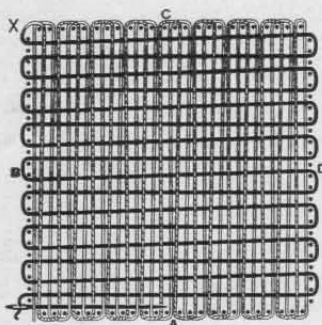


FIGURE 3. Measure off sufficient thread for weaving by winding around the outside of teeth nine times for a 4-inch block or 13 times for a 4x8 inch block, then thread Jiffy Needle. Pass thread around first tooth on Side B, start with needle at point marked "X" and weave in Row 1 on graph of whichever pattern is selected on Pages 7 and 8, bringing needle out ahead of first tooth on Side D. Draw thread through, take up first two teeth and weave in Row 2.

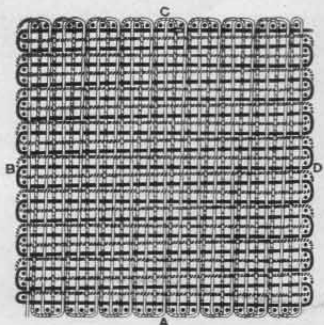
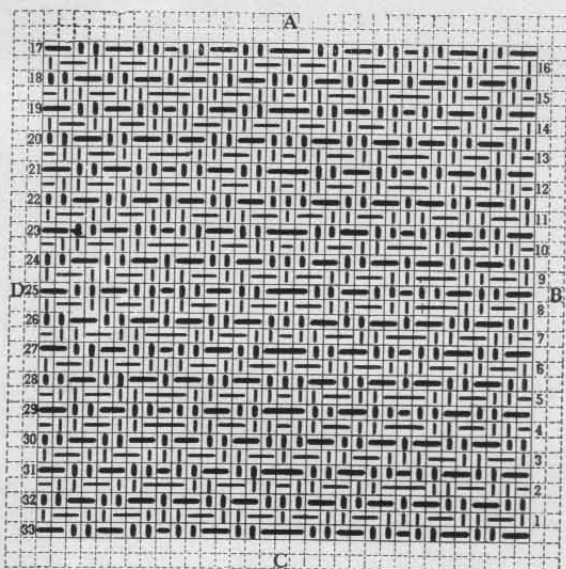
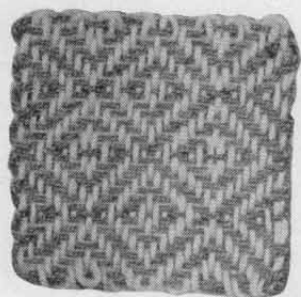


FIGURE 4. Row 17 of the Pattern is woven in **NEXT TO TEETH** as the anchoring row on Side A, as illustrated above, taking in two teeth and leaving one as in plain weaving. Row 33 is the anchoring row on Side C and should also be put in **NEXT TO TEETH.** Run end of yarn back into work to finish, and before lifting work from frame, be sure to stroke weaving well outward to all four edges to minimize size of loops, also distribute threads of pattern evenly throughout block for regularity of pattern.

NOTE that on graph patterns, weaving of odd numbered rows starts from Side B and even numbered rows start from Side A. In all instances, two teeth are circled between each row of weaving with the exception of the start of Row 17 where only one tooth is circled, this row being **NEXT TO TEETH** along Side A. In design weaving the pattern will not show up until the 2nd weaving is started. Each thread of the 2nd weaving is between threads of the first weaving, however, Row 33 is **ALONG TEETH** on Side C.

PLAIN BLOCKS—In order that the loops may be properly matched, if it is desired to use blocks of plain weaving in combination with design blocks, the loom should be threaded for design weaving and woven with 33 threads of plain weaving (OI, UI, OI, etc.).

DESIGN PATTERN NO. 1



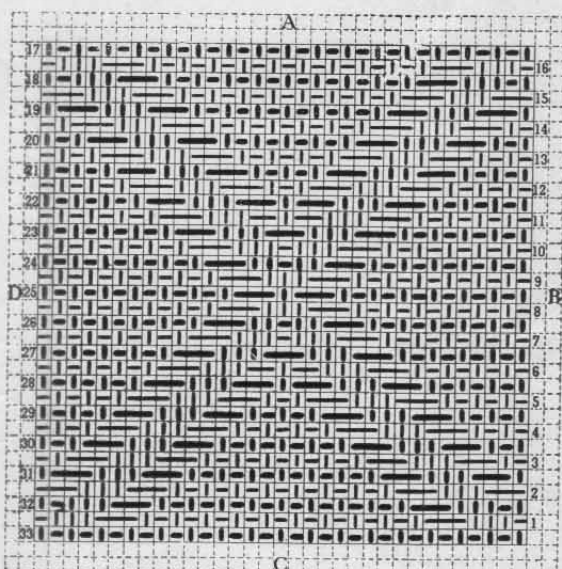
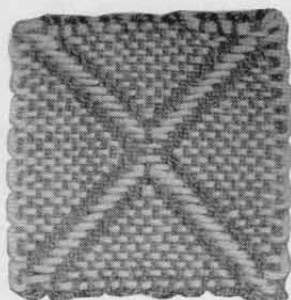
FIRST WEAVING

- Row 1—U1, O2, U2, O2, U3, O2, U2, O2, U1, O2, U2, O2, U2, O2, U3, O2, U2, O2, U1.
- Row 2—O1, U2, O2, U2, O3, U2, O2, U2, O1, U2, O2, U2, O3, U2, O2, U2, O1.
- Row 3—Same as Row 1.
- Row 4—Same as Row 2.
- Row 5—Same as Row 2.
- Row 6—Same as Row 1.
- Row 7—Same as Row 1.
- Row 8—Same as Row 1.
- Row 9—Same as Row 1.
- Row 10—Same as Row 2.
- Row 11—Same as Row 1.
- Row 12—Same as Row 2.
- Row 13—Same as Row 2.
- Row 14—Same as Row 1.
- Row 15—Same as Row 2.
- Row 16—Same as Row 1.

SECOND WEAVING

- Row 17—O2, U2, O2, U2, O1, U2, O2, U3, O3, U2, O2, U2, O1, U2, O2, U2, O2. (Put this row in NEXT TO TEETH ON SIDE A, weaving from Side B to D).
- Now turn loom half around holding Side A toward you, then weave Row 18 from Side D to B.
- Row 18—U2, O2, U2, O2, U1, O2, U2, O2, U3, O2, U2, O2, U1, O2, U2, O2, U2.
- Row 19—Same as Row 17.
- Row 20—Same as Row 18.
- Row 21—Same as Row 17.
- Row 22—Same as Row 18.
- Row 23—Same as Row 17.
- Row 24—Same as Row 18.
- Row 25—Same as Row 17.
- Row 26—Same as Row 18.
- Row 27—Same as Row 17.
- Row 28—Same as Row 18.
- Row 29—Same as Row 17.
- Row 30—Same as Row 18.
- Row 31—Same as Row 17.
- Row 32—Same as Row 18.
- Row 33—Same as Row 17. (Put this row in NEXT TO TEETH on Side C).

DESIGN PATTERN NO. 2



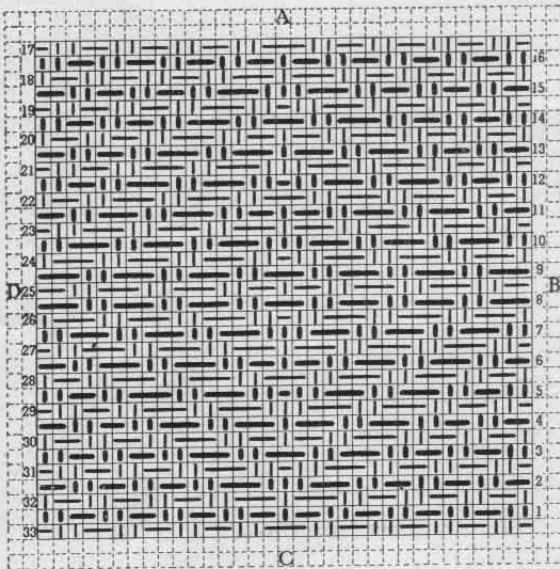
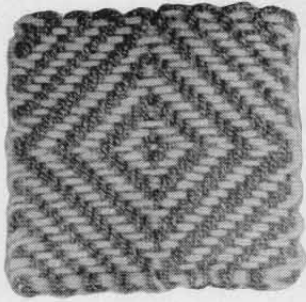
FIRST WEAVING

- Row 1—O1, U3, O3, Pl.W. (U1, O1) 19 St., O3, U3, O1.
- Row 2—O3, U3, O3, Pl.W. (U1, O1) 15 St., O3, U3, O3.
- Row 3—O1, U1, O3, U3, O3, Pl.W. 11 St., O3, U3, O3, U1, O1.
- Row 4—O1, U1, O1, U1, O3, U3, O3, Pl.W. 7 St., O3, U3, O3, U1, O1, U1, O1.
- Row 5—Pl.W. (O1, U1) 6 St., O3, U3, O3, U1, O1, U1, O3, U3, O3, Pl.W. 6 St.
- Row 6—Pl.W. (O1, U1) 8 St., O3, U3, O2, U1, O2, U3, O3, Pl.W. 8 St.
- Row 7—Pl.W. (O1, U1) 10 St., O3, U3, O1, U3, O3, Pl.W. 10 St.
- Row 8—Pl.W. (O1, U1) 12 St., O3, U3, O3, Pl.W. 12 St.
- Row 9—Same as Row 8.
- Row 10—Same as Row 7.
- Row 11—Same as Row 6.
- Row 12—Same as Row 5.
- Row 13—Same as Row 4.
- Row 14—Same as Row 3.
- Row 15—Same as Row 2.
- Row 16—Same as Row 1.

SECOND WEAVING

- Row 17—Plain Weaving. (Put this row in NEXT TO TEETH ON SIDE A, weaving from Side B to D). Now turn loom half around, holding Side A toward you, then weave Row 18 from Side D to B.
- Row 18—U1, O1, U3, O3, Pl.W. 17 St., O3, U3, O1, U1.
- Row 19—U1, O3, U3, O3, Pl.W. 13 St., O3, U3, O3, U1.
- Row 20—U1, O1, U1, O3, U3, O3, Pl.W. 9 St., O3, U3, O3, U1, O1, U1.
- Row 21—U1, O1, U1, O1, U1, O3, U3, O3, Pl.W. 5 St., O3, U3, O3, U1, O1, U1, O1.
- Row 22—Pl.W. (U1, O1) 7 St., O3, U3, O3, U1, O3, U3, Pl.W. 7 St.
- Row 23—Pl.W. (U1, O1) 9 St., O3, U3, O3, U3, O3, Pl.W. 9 St.
- Row 24—Pl.W. (U1, O1) 11 St., O3, U3, O1, U2, O3, Pl.W. 11 St.
- Row 25—Pl.W. (U1, O1) 13 St., O3, U1, O3, Pl.W. 13 St.
- Row 26—Same as Row 24.
- Row 27—Same as Row 23.
- Row 28—Same as Row 22, etc. to Row 33 as shown on diagram, putting in Row 33 NEXT TO TEETH on Side C.

DESIGN PATTERN NO. 3



FIRST WEAVING

- Row 1—Entire row U2, O2, except St. 17 (U1).
- Row 2—O2, U2, to St. 13, O13, 14, 15, U16, 17, 18, O19, 20, 21, U2, O2, U2, O2 etc.
- Row 3—U2, O2, U2, O2, U2, O3, U2, O3, U2, O2, U2, O2, U2.
- Row 4—O2, U2, O2, U2, O3, U2, O3, O1, U1, O3, U2, O3, U2, O2, U2.
- Row 5—U2, O2, U2, O3, U2, O3, U2, O1, U1, O3, U2, O3, U2, O2, U2.
- Row 6—O2, U2, O3, U2, O3, U2, O1, O2, U2, O3, U2, O3, U2, O2.
- Row 7—U2, O3, U2, O3, U2, O3, U3, O3, U2, O3, U2, O3, U2, O3.
- Row 8—Entire Row O3, U2.
- Row 9—Same as Row 8, and repeat Rows 7, 6, 5, 4, 3, 2, 1 to complete first weaving.

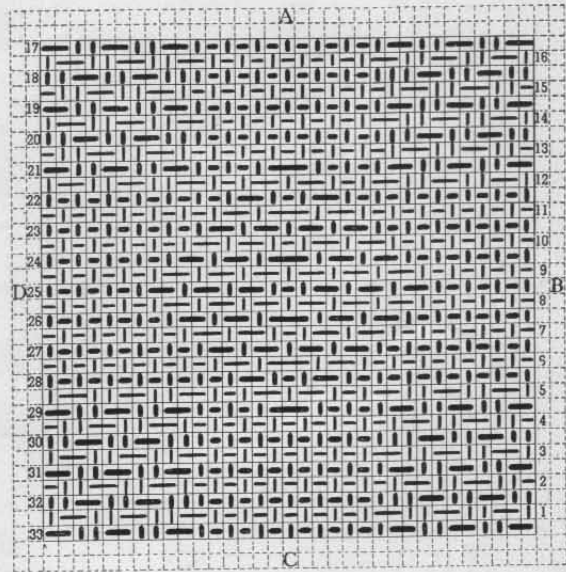
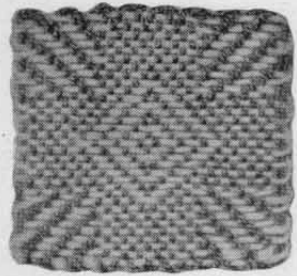
SECOND WEAVING

- Row 17—O1, U2, O2, U2, O2, U2, O2, U2, O3, U2, O2, U2, O2, U2, O2, U2, O1. (Put this row in NEXT TO

TEETH ON SIDE A, weaving from Side B to D). Now turn loom half around, holding Side A toward you, then weave Row 18 from Side D to B.

- Row 18—U1, O2, U2, O2, U2, O2, U2, O3, U1, O3, U2, O2, U2, O2, U2, O2, U1.
- Row 19—O1, U2, O2, U2, O2, U2, O2, U2, O1, U2, O3, U2, O2, U2, O2, O1.
- Row 20—U1, O2, U2, O2, U2, O3, U2, O2, U1, O2, U2, O3, U2, O2, U2, O2, U1.
- Row 21—O1, U2, O2, U2, O3, U2, O3, U3, O2, U2, O3, U2, O2, U2, O1.
- Row 22—U1, O2, U2, O3, U2, O3, U2, O2, U1, O2, U2, O3, U2, O3, U2, U2, U1.
- Row 23—O1, U2, O3, U2, O3, U2, O3, U1, O3, U2, O3, U2, O3, U2, O1.
- Row 24—U1, O3, U2, O3, U2, O3, U2, O1, U2, O3, U2, O3, U2, O3, U2, O3, U1.
- Row 25—Same as Row 6.
- Row 26—Same as Row 24.
- Row 27—Same as Row 23, etc., to Row 33 as shown on Diagram, putting in Row 33 NEXT TO TEETH on Side C.

DESIGN PATTERN NO. 4



FIRST WEAVING

- Row 1—U1, O2, U2, O2, U2, O2, Pl.W. 11 St., O2, U2, O2, U2, O2, U1.
- Row 2—O1, U2, O2, U2, O2, U2, O2, Pl.W. 15 St., O2, U2, O2, U2, O2, U1, O1.
- Row 3—Same as Row 1.
- Row 4—Same as Row 2.
- Row 5—U1, O2, U2, O2, U2, O2, U1, O1, U1, O2, U1, O2, U2, O2, U1, O2, U2, U1.
- Row 6—Pl.W. (O1, U1) 12 St., O2, U1, O3, U1, O2, U1, O1, Pl.W. 12 St.
- Row 7—Pl.W. (O1, U1) 10 St., O2, U1, O2, U1, O1, U1, O2, Pl.W. 10 St.
- Row 8—Pl.W. (O1, U1) 8 St., O2, U1, O2, U1, O2, U1, O2, U1, O2, Pl.W. 8 St.
- Row 9—Same as Row 8.
- Row 10—Same as Row 7.
- Row 11—Same as Row 6.
- Row 12—Same as Row 5.
- Row 13—Same as Row 4.
- Row 14—Same as Row 3.
- Row 15—Same as Row 2.
- Row 16—Same as Row 1.

SECOND WEAVING

- Row 17—O2, U2, O2, U2, O2, Pl.W. 13 St., O2, U2, O2, U2, O2. (Put this row in NEXT

TO TEETH on Side A, weaving from Side B to D, then turn loom half around holding Side A toward you, and weave Row 18 from Side D to B.

- Row 18—U2, O2, U2, O2, U3, Pl.W. 11 St., U3, O2, U2, O2, U2.
- Row 19—Same as Row 17.
- Row 20—Same as Row 18.
- Row 21—O2, U2, O2, U2, O2, U1, O1, U1, O1, U1, O3, U1, O1, U1, O1, U1, O2, U2, O2.
- Row 22—Pl.W. (U1, O1) 13 St., O2, U1, O1, U1, O2, Pl.W. 13 St.
- Row 23—Pl.W. (U1, O1) 11 St., O2, U1, O2, U1, O2, U1, O2, Pl.W. 11 St.
- Row 24—Pl.W. (U1, O1) 9 St., O2, U1, O2, U1, O3, U1, O2, U1, O2, Pl.W. 9 St.
- Row 25—Pl.W. (U1, O1) 7 St., O2, U1, O2, U1, O2, U1, O1, U1, O2, U1, O2, U1, O1, U1, O2, U1, O2, U1, O2, Pl.W. 7 St.
- Row 26—Same as Row 24.
- Row 27—Same as Row 23.
- Row 28—Same as Row 22.
- Row 29—Same as Row 21.
- Row 30—Same as Row 20.
- Row 31—Same as Row 19.
- Row 32—Same as Row 18.
- Row 33—33 in NEXT TO TEETH on Side C).



Floral Afghan

This is a very beautiful afghan with or without the floral design. If the floral decoration is desired, secure a floral transfer pattern to suit individual taste.

The floral decoration is applied with a cross stitch. Use green for leaves and two shades of rose for flowers. A narrow edging may be crocheted around entire afghan.

This afghan is slightly larger than the average, being approximately 50 x 76 inches in size. The row of black blocks on each end of the afghan may be omitted and fringe used instead. If fringe is used it should be the same color as the block to which it is attached.

Block No.	Number of Blocks Required	Size of Block	Design Suggested	Color Suggested
No. 1	30	4x8	Ruff Weave	Black
No. 2	38	4x4	Ruff Weave	Black
No. 3	36	4x4	Plain Weave	White
No. 4	27	4x8	Plain Weave	White
No. 5	72	4x4	Design Weave No. 1 (See Page 7)	Blue

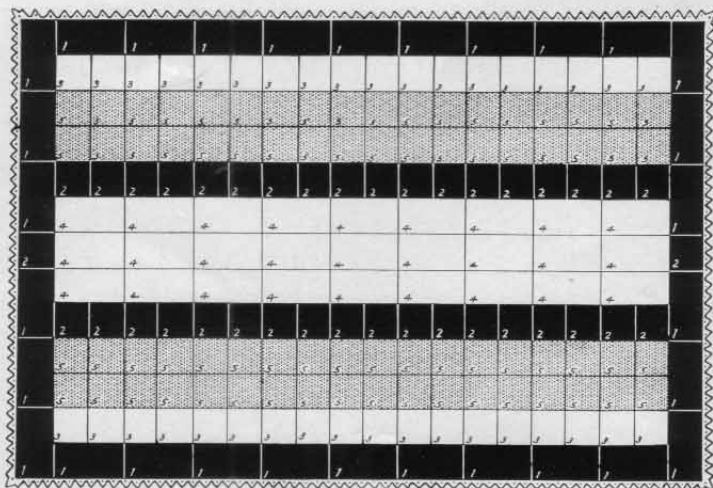
MATERIAL SUGGESTED:

Knitting Worsted
Cotton or Wool Yarn
Afghan Yarn

MATERIAL REQUIRED:

13 Oz. Black—4 ply
9½ Oz. Blue—4 ply
12 Oz. White—4 ply

(The above quantities are exclusive of crocheted edging and applique.)





Indian Afghan

A beautiful afghan in which the entire design is created by the weaving of individual vari-colored blocks.

This highly decorative afghan of typical Indian design will be found most adaptable for use in the rustic type of home or in the boy's room or den.

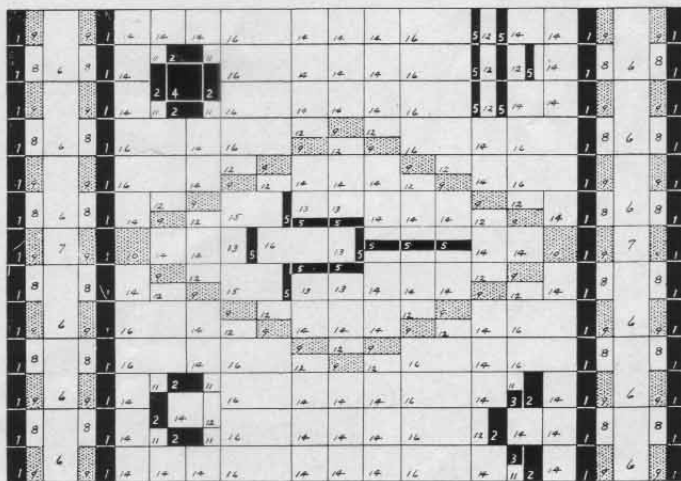
Block No.	Number of Blocks Required	Size of Block	Suggested Design	Suggested Color
No. 1	52	2x4	Lace Weave	Black
No. 2	10	2x4	Plain Weave	Black
No. 3	2	2x2	Plain Weave	Black
No. 4	1	4x4	Plain Weave	Black
No. 5	18	1x4	Plain Weave	Black
No. 6	12	4x8	Lace Weave	White
No. 7	2	4x4	Lace Weave	White
No. 8	24	2x4	Lace Weave	White
No. 9	50	2x4	Lace Weave	Red
No. 10	2	4x4	Lace Weave	Red
No. 11	10	2x2	Lace Weave	Gray
No. 12	28	2x4	Lace Weave	Gray
No. 13	6	3x4	Lace Weave	Gray
No. 14	68	4x4	Lace Weave	Gray
No. 15	2	4x7	Lace Weave	Gray
No. 16	25	4x8	Lace Weave	Gray

MATERIAL SUGGESTED:

Knitting Worsted or
Afghan Wool

MATERIAL REQUIRED:

- 5 Oz. Black—4 Ply Yarn
- 5 Oz. White—4 Ply Yarn
- 3 1/2 Oz. Red—4 Ply Yarn
- 19 Oz. Gray—4 Ply Yarn





Toy Soldier Afghan

This afghan makes a very attractive gift for a child, one that will be appreciated and remembered for many years. The red, white and blue colors are particularly pleasing to children and this afghan will be decorative as well as most practical in the child's room.

The fringe on this afghan is to be the same color as the block to which it is attached. Completely assemble the afghan before applying the flags and toy soldiers.

Block No.	Number of Blocks Required	Size of Block	Suggested Design	Suggested Color
No. 1	12	4x8	*Design Weave No. 1	White
No. 2	2	4x4	*Design Weave No. 1	White
No. 3	2	4x4	Lace Weave	Red
No. 4	12	4x8	Ruff Weave	Blue
No. 5	2	4x4	Ruff Weave	Blue
No. 6	12	4x8	Lace Weave	Red
No. 7	9	4x8	Plain Weave	White
No. 8	12	2x4	Ruff Weave	Blue
No. 9	12	2x4	Lace Weave	White
No. 10	12	2x4	Lace Weave	Red

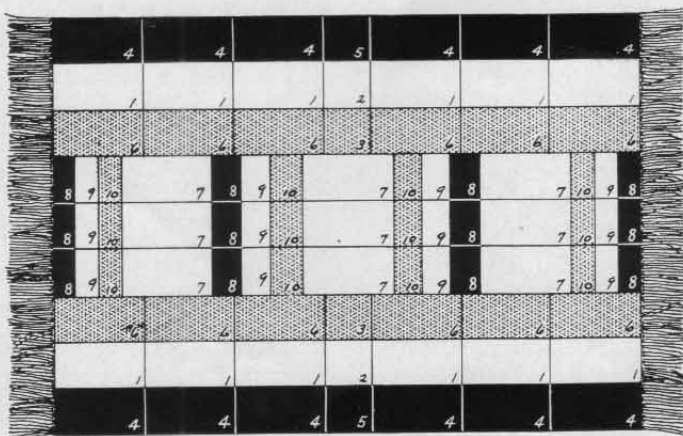
* See Page 7.

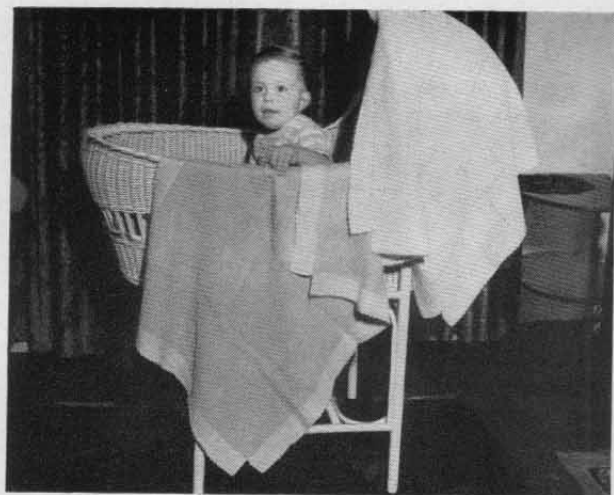
SUGGESTED MATERIAL:

Knitting Worsted
Cotton or Wool Yarn
Afghan Yarn

MATERIAL REQUIRED:

5 Oz. Blue—4 Ply Yarn
7½ Oz. White—4 Ply Yarn
4½ Oz. Red—4 Ply Yarn





Baby Blanket

A mother will derive everlasting pleasure and joy from hand-weaving this beautiful and luxurious blanket for her baby.

At a baby shower, a hand woven combination set of a baby jacket, cap and blanket will be appreciated more than any other gift.

Block No.	Number of Blocks Required	Size of Block	Design Suggested	Color Suggested
No. 1	28	2x4	Plain Weave	White
No. 2	48	4x4	Diamond Weave	Pink

This baby blanket is equally attractive when made with any of the weaving designs shown in this book. Color combinations of white and blue, white and pink, or pink and blue are very attractive. The applique of design has an unlimited field for original points of interest such as bunnies, owls, dolls, or any child-like motif. Cross stitching Baby's name is another way of adding individuality to the baby blanket.

SUGGESTED MATERIAL:

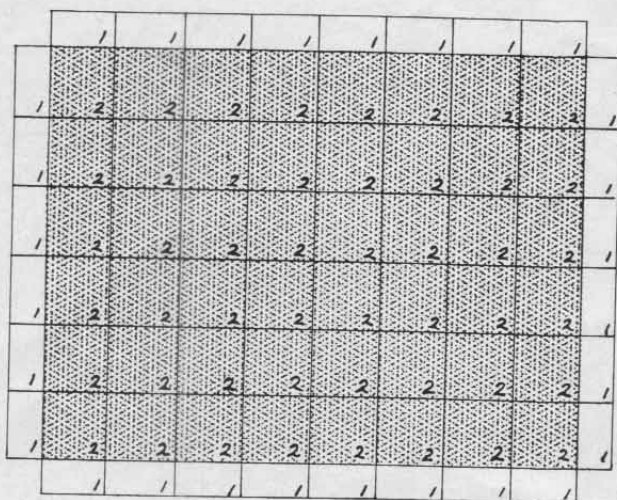
BABY POMPADOUR YARN OR
KNITTING WORSTED

In the event you cannot secure 2 Ply Baby Pompadour yarn, a 4 Ply Worsted yarn may be used, approximately the same amount being required; however, in this instance, the loom is to be threaded and woven with a single thread.

MATERIAL REQUIRED:

1½ Oz. White—2 Ply
4½ Oz. Pink—2 Ply

(Use yarn double for both threading the loom and weaving)





A baby jacket and cap made with a combination of pink and white, blue and white, all pink or all blue will be more highly prized than any other gift received by the mother of a new baby, particularly so when made of delicate shades of baby pompadour yarn, using the lace weave pattern. This combination produces an article so definitely different and dainty in appearance that it endears itself to the receiver of the gift. This lovely set will dress the baby for any occasion, is sufficiently warm, and is easily and quickly made, making it ideal for a gift.

MATERIAL REQUIRED

For body of jacket, sleeves and cap—250 Yds. 2 Ply Baby Pompadour or $1\frac{1}{2}$ Oz.

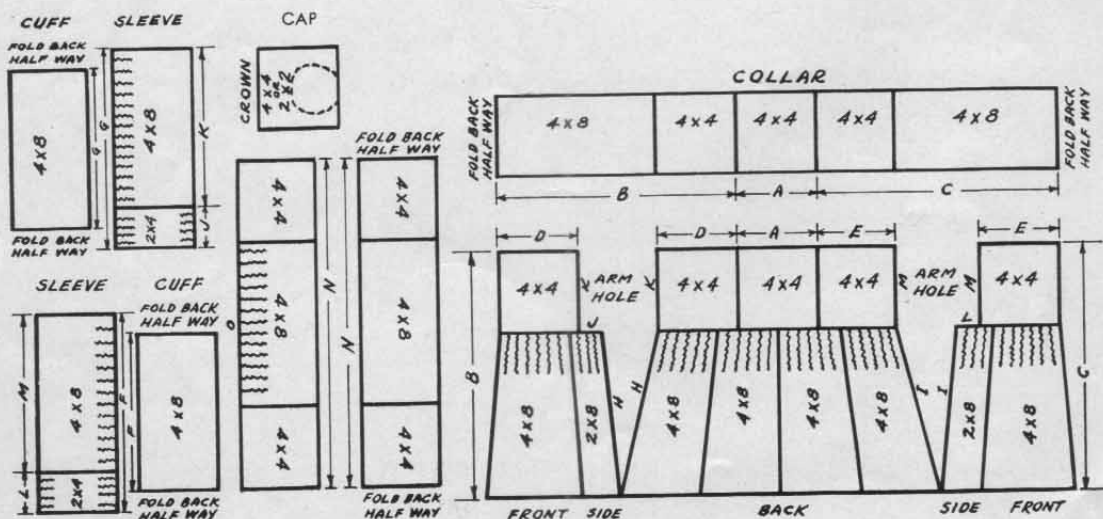
For collar, cuffs, and cap facing—130 Yds. 2 Ply Baby Pompadour or $\frac{3}{4}$ Oz.

DIRECTIONS FOR ASSEMBLING

First make the blocks shown in the accompanying pattern, then assemble the collar, body of the jacket and sleeves as shown. In assembling, note that the wavy lines indicate gathering. After you have the main blocks fastened together, attach H to H and I to I, then D to D and E to E. This completes the body of the jacket, leaving the sides J, K, L and M free for the arm holes. Note that the 2x4" block in the sleeve should be on the bottom. Fasten J to J, L to L, gathering as indicated, then fasten K to K and M to M. The cuff is fastened to the sleeve, gathering two inches in the entire

side G. Fold back the cuff half way. Fasten the collar A to A, B to B and C to C, folding back half way for facing. The cap is fastened together in the same manner, side N to N, and the 4x8" block is gathered around the dotted circle in the crown. This crown may be made of a 2x2" block or 4x4" block, as desired. After fastening the crown it is well to sew all edges very carefully, then trim off the surplus material.

Rosettes may be made and tie strings of simple crochet stitch. Small snowball tassels may be made by tying a number of threads together and fluffing the ends.





NECK SCARF

By using the various patterns for blocks given in this book and both solid and combinations of colors, any number of beautiful neck scarfs may be made. A neck scarf made on the Jiffy Loom, following the directions given, will have a definite appeal and is an article which the owner will be proud to wear.

DIRECTIONS FOR MAKING SPECIAL STRIPED BLOCK NO. 2

Thread the loom as directed for Design Weaving on Page 6. Use color desired for contrasting stripe in threading loom. After threading loom break yarn and tie on white. Weave Rows 1, 2, 3, 4, and 5, as instructed in Pattern No. 1, Page 7. Break yarn, tie on contrasting color, and weave Rows 6, 7, 8, 9, 10 and 11. Break yarn and tie on white, weaving Rows 12, 13, 14, 15, 16, 17, 18, 19, 20 and 21. Break yarn, tie on contrasting color and weave Rows 22, 23, 24, 25, 26, 27 and 28. Break thread and finish Rows 29, 30, 31, 32 and 33 to completion of block, with white. There should be a stripe of solid color through the center of the block when finished. Two stripes may be made by reversing the order of the colors when weaving.

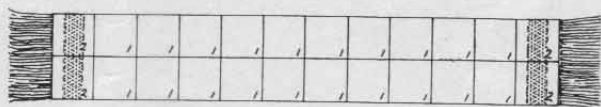
SUGGESTED MATERIAL:

Baby Pompadour Yarn
Angora Yarn
Eider-down Wool

MATERIAL REQUIRED:

1 Oz. White Baby Pompadour Yarn—2 Ply.
1/4 Oz. Contrasting Baby Pompadour Yarn—2 Ply.
(For Stripe)

Block No.	Number of Blocks Required	Size of Block	Design Suggested	Color Suggested
No. 1	20	4x4	Lace Weave	White
No. 2	4	4x4	Special Striped Block	White and Color



CHAIR DOILY SET

This is a very serviceable and beautiful covering for the arms and back of an upholstered chair or davenport. It is sufficiently heavy to give good protection and is washable.

Many variations may be made by using the various block designs shown on the preceding pages of this book. Also, by adding two extra rows of blocks on one side and one end of each piece, and making two additional smaller pieces, a beautiful five piece luncheon set may be made which will set off a gleaming silver and crystal luncheon service.

Ecu, being a neutral color, is suggested. However, other shades may be used according to the individual taste or to harmonize with particular surroundings.

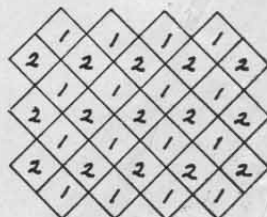
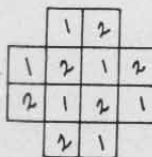
Block No.	Number of Blocks Required	Size of Block	Design Suggested	Color Suggested
1	28	2x2	Plain Weave	Ecu
2	27	2x2	Diamond Weave	Ecu

SIZE:

1 Center Piece approximately 12x16 inches.
2 Arm Rests approximately 9x10 inches.

MATERIAL REQUIRED:

6 Balls Pearl Crochet Cotton No. 3 (40 Yds.)
(Use material double for both threading loom and weaving.)



EDUCATIONAL · · · ECONOMICAL · · · PROFITABLE

Hand Weaving



JEFF - LOOM