

"This free PDF file was provided by www.eLoomaNation.com for personal use only. Its sale is prohibited and illegal."

*Make* POT HOLDERS-MAT-SCARFS-SWEATERS  
AFGHANS - BEDSPREADS - BAGS

DAVIS  
**LOOM**  
• ADJUSTABLE •



MANUFACTURED BY  
H. DAVIS COMPANY  
NEW YORK, N.Y.

MADE IN U.S.A.

**FOR WEAVING**  
WITH LOOPERS AND YARN

## WEAVING WITH 4 PLY SPORT YARN

Adjust the Davis Loom to desired size of square or rectangle. Wind end of yarn around the entire corner of one end of the loom nearest you. Bring the free end of the yarn through the space at the left of the first tooth of the side nearest you. Bring yarn across to opposite side of the loom around the tooth and back towards you and continue to loop the teeth back and forth until every tooth on the 2 opposite sides of the loom is looped.



Now you are ready to cross-weave. Break the loose end of the yarn about 6 feet from the loom. Thread needle and begin weaving as closely as possible to the teeth of the rail nearest you, by passing the needle from right to left under the first strand and over the second strand, under the third strand and over the fourth strand and so on until you have completely crossed the loom. Loop the first loath of the left side of loom and start the needle back to right side of loom, being sure that every strand that you went under with the needle you will now go over and those that you went over with the needle you will go under with the needle. Continue in this manner until the entire square is woven.



As you cross weave keep strands close together and in a straight line.

Also, make sure that every loath has been looped.

To remove a square slip teeth off loom.



SCARF AND BAG



SWEATER



BABY BLANKET

To sew squares together. Match the corners and loops. Sew over with the same color yarn and catch the loops of both squares in each overcast stitch.

Now sew squares into strips and sew strips together to form desired article. Press flat on both sides with damp cloth and warm iron.

### **WEAVING WITH 4 PLY WORSTED YARN**

Instructions are the same as weaving with Sport yarn, except that you weave with two strands of yarn together and you loop every other tooth instead of every tooth.

This will give you a closely woven material. If you want a loosely woven material, use one strand of yarn instead of two.

### **WEAVING WITH RUG YARN**

Instructions are the same as weaving with Sport yarn, except that you weave a single strand of Rug Yarn on every other tooth.

The previous instructions show how to weave a simple cross woven square or rectangle. Different effects may be obtained by using various colored yarns. Thus, plaid, block and striped effects may be designed.

These squares and rectangles may be joined together to make scarfs, blankets, afghans, purses, bags, sweaters, dresses, Doll accessories, etc.

Pat. Pending

Mfg. by H. DAVIS CO.

New York, N. Y.

The DAVIS ADJUSTABLE LOOM can be used to make squares with loopers, Baby or Sport Yarn, 4 ply Worsted Yarn or Rug Yarn.

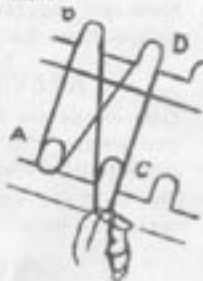
With the Davis Loom you can weave any pattern from 4 to 7 inch squares and their relative rectangles.

Example—To make 7 inch squares, insert angles in slits marked 7 inches.

#### SPECIAL INSTRUCTIONS

For using 4" Davis Adjustable Loom No 40A, to make Pot Holders, Table Mats, Afghans, etc., with loopers.

Use regular loopers which stretch from 7" to 8". Merely stretch looper as shown in diagram from A to B to C and D. This one looper stretches over 4 teeth. Follow same procedure for cross weaving.



#### WEAVING WITH LOOPERS

For Pot Holders, Table Mats, Bath Mats, etc.



Illustration 1

Stretch loops across loom on every other tooth from A to B. You can obtain various designs or patterns by the arrangement of the colored loops.

Do not loop the first three teeth. Begin and end on fourth tooth from each side of the loom. Same with cross weaving.

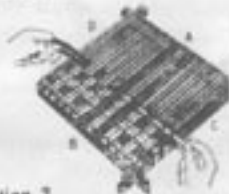


Illustration 2

To cross weave, push hook from C to D over and under alternate strands or loops. Catch loop which you have placed on tooth D and pull through with hook on tooth C.

Cross weaving is also done on every other tooth.



Illustration 3

To finish a laced edge pot holder insert crochet hook in a loop of any corner of square. Then, insert hook through next loop, catching second loop and pulling it through the

first, thereby forming a chain stitch. Continue until all loops have been crocheted. Now, finish by leaving last loop in 4th corner loose to serve as a hanger for pot holder.



Illustration 4

To finish a loop-edge pot holder, sew or crochet with cotton around the 4 sides before taking off the loom.



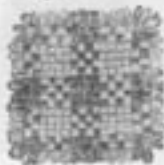
Illustration 5

To join 2 or more loop edge pot holders, interlace loops around the sides of the squares.



Illustration 6

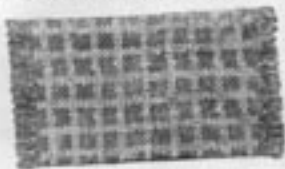
Join the corners of 4 squares by lacing the corners with cotton thread. Pull corners together and knot tightly.



LOOP EDGE  
POT HOLDER



LACED EDGE  
POT HOLDER



SCARF